

Historic, Archive Document

Do not assume content reflects current scientific knowledge, policies, or practices.

62.23

Mission

LIBRARY
RECEIVED

★ JUN 23 1948 ★

U. S. Department of Agriculture

Gardens

Techny, Ill.

1948

Price-List

IRIS

PEONIES

HEMEROCALLIS

Greetings

There is deep satisfaction in growing perennials possessing the ability to withstand rigorous Winters and trying periods throughout the balance of the year and still come through with a gorgeous display of bloom. Rarely are we denied the pleasure of beautiful bloom on our PEONIES, IRIS and HEMEROCALLIS — the three dependable hardy perennials we are featuring in this catalog.

We are truly appreciative of the many nice orders we received last season and the many favorable comments on our 1947 catalog. In compiling this issue we have added a considerable number of new varieties and in writing the descriptions we have endeavored to paint a word picture that would convey a true impression of the variety, enabling any prospective purchaser to form his own deductions and make evaluations of the various offerings. We hope you will find this catalog equally as alluring as our previous issue.

In our listing will be found some of the most noteworthy peonies in commerce. Some of the most recent originations as well as some of the outstanding creations that have stood the test of time are presented for your consideration. We do want to call your special attention to the new varieties we offer in this catalog of the late E. F. Kelsey as well as those of Col. J. C. Nicholls. Both of these gentlemen ranked very high as originators of outstanding peonies. Two years ago we acquired half the entire stock from Messrs. Kelsey and Nicholls. The plants have made substantial growth since their removal from New York State and should give a good account of themselves during the next blooming season in June. In these collections will be found some of the finest peonies yet produced.

Our constant testing and study of the new originations enables us to evaluate them thoroughly and whatever information we have acquired is available to our customers. We will gladly assist you in making selections; advising best methods of culture; color combinations; adaptations to locations, etc.

Nothing can give more lasting satisfaction in the garden than a liberal planting of PEONIES, IRIS and HEMEROCALLIS — three hardy dependable perennials that need no coddling. They become more valuable with the passing of years.

These are the only three perennials we ship out of the gardens, but local customers will also find a splendid assortment of other worthwhile perennials in our plantings that can be supplied on a cash and carry basis.

A cordial invitation is extended to visit our gardens and make your own selection and appraisal of our stock in the varieties we have to offer.

Your patronage is solicited and we will make every effort to please you with quality stock and prompt handling at the proper shipping time. We welcome the privilege of serving you to the best of our ability. If you have flower-loving friends, supply us with their name and address and we will gladly mail them a copy of this catalog.

Our list of FALL BULBS — TULIPS, HYACINTHS, NARCISSUS, etc., will be mailed to you in early fall.

MISSION GARDENS
TECHNY, ILL.

Located on Highway 42A (Waukegan Road), 3 miles north of Glenview



PEONIES

FLORAL JEWELS OF JUNE

For amateur and professional growers

Within the past twenty-five years there has been great improvement made in the peony. Colors have been improved; new colors introduced; hybrids greatly extending the season of bloom have been developed; vigor of plant and sturdiness of stem have been greatly improved, making the peony one of our most desirable perennials. It stands out as King of all perennials. No more hardy plant can be found to grace the gardens or enhance our landscape effects. They are truly satisfying, dependable and majestic. Their extreme-long life and their wide diversity in color, type and season of bloom, makes it possible to enjoy them over a long period of time. Their enchanting loveliness thrills one with delight. You just can't find a more worthy perennial.

For quick reference of peony varieties see our complete alphabetical list on pages 54 and 55.

WHITE PEONIES

- A. B. C. Nicholls** (Nicholls 1937) 9.45 Col. Nicholls considers this one of his very best introductions. It is a lovely, double, late white, with a hint of pink and a decided orange glow at the base of petals. Stock of this variety very scarce. This origination will be eagerly sought after when better known and more extensively planted. **\$4.75**
- A. B. Franklin** (Franklin 1928) 9.27 A very light blush when first opening, fading white. Very lovely flower of beautiful form that has a place with the finest peonies produced. A Gold Medal winner and very worthy of that distinction. We have watched this peony since its introduction in 1928 and can find no fault with it in any way. Late bloomer. **\$5.00**
- Alesia** (Lemoine 1927) 9.05 A late white peony of much refinement. It will be found in the finest collections where quality stock is represented. A fine exhibition variety. Stock very limited. **\$5.00**
- Alice Harding** (Lemoine 1922) 9.36 Double type, large midseason white. Very imposing appearance. Even rounded guard petals of delicate flesh-pink, flushed darker on the reverse, surrounding a cupped center of long, irregular petals of creamy white. Some stamens concealed in the center of flower. Very fragrant. Stems and foliage good. One of the finest French originations. **\$4.00**
- Alsace Lorraine** (Lemoine 1906) 8.8 Pure white, tinted with cream and buff. Double, large. Late midseason. Petals of a wavy texture, very symmetrically arranged in circular form. Very attractive, and makes a splendid landscape subject. Don't pass this one up. **\$1.50**
- Antoniette Heim** (Kelsey 1939) Double white. Very similar to River Mist but colored a bit more. Good, strong grower. Late. **\$8.00**

- Avalanche** (Crousse 1886) 8.7 Double type, large, late, midseason variety. A blush-white of waxy texture with a faint pink center and very narrow crimson edges on a few of the center petals. A compact, generally incurved flower with the tops of the outer petals recurved from its ball-like center. Slight fragrance. This is a standard cut flower variety and extensively grown. **\$1.00**
- Ball O' Cotton** (Franklin 1920) 8.8 As the name implies, this peony gives the impression of a large ball of cotton. Double type, large, late-midseason. Petals incurved, overlapping at first, forming a large, compact white ball. Later, the enormous outer petals unfold and the evenly graduated inner petals form a rose-like center of crisp texture. There is a faint lemon tint in the center when fully open. Fragrance mild and sweet. Strong stems, foliage good. Excellent habit for garden use. **\$3.00**
- Baroness Schroeder** (Kelway 1889) 9.0 A double white tinted flesh pink. This pink will disappear as flower opens leaving it a pure white. Tall, strong stems and one of the best cut flowers we have. Much in demand by commercial growers. **\$1.50**
- Betty Blossom** (Thurlow 1925) 8.9 A large, double, late mid-season variety, globular with white guard petals, faintly tinted yellow and sometimes flecked on the back. The distinct collar of narrow petals heavily edged gold and a tuft of yellow staminodes of clear yellow at the extreme center, produces a charming and distinct yellow and white effect. **\$1.50**
- Blanche Elie** (Dr. F. G. Brethour 1934) Double, midseason. White guards, pale yellow collar turning white. Often shows red markings. A very fine flower. This is very similar in form to Mons. Jules Elie. Fragrant. Stock very scarce. **\$25.00**
- Charlene** (Kelsey 1942) Double, ivory white with cupped shaped center that resembles the cup of the night blooming Cereus. Good stems. Late midseason bloomer. Flowers as large as Martha Bulloch and as beautiful as Kelway's Glorious. **\$7.00**
- Diana** (Sass 1930) A double, late white of good form and flower. There is a dark red Jap. variety masquerading under this name also. Stock of the white variety is rather limited and we have only a few to offer this season. **\$2.00**
- Dr. J. H. Neeley** (Good & Reese 1930) 9.27 Double, midseason white with a blush tint. Fragrant, strong grower and a splendid variety for any collection. Stock limited. **\$5.00**
- Duchesse de Nemours** (Cadet 1856) 8.1 Double type, large and quite early. Cupped white guards and a moderately full center of light, canary-yellow, deepening to pale green at the base of petals. Delightfully fragrant. Medium tall. Very floriferous with stems tall and erect. Excellent foliage. **\$1.00**
- Duluth** (Franklin 1931) 9.03 Large, rose type, pure white blooms borne on good, stiff stems 36 inches in height. A very vigorous grower with fine foliage of a deep, rich green. Makes a fine landscape specimen plant, as the flowers are held high and erect on the plant under all conditions. Texture of petals most satisfactory. Should make a good commercial variety as well. **\$4.00**
- Elsa Sass** (H. P. Sass 1930) 9.46 A Gold Medal variety very worthy of the distinction. Full double, rather dwarf growing. A lovely white, veiled pink. Stems stiff and strong, holding the beautiful large bloom erect under all conditions. A true rose form with large petals throughout. Does well everywhere and is an outstanding favorite with all who grow it and a consistent winner at shows. One of the finest Sass originations. Possesses a texture like velvet and shows remarkable class. Another "must have." **\$4.75**

- E. F. Kelsey** (Kelsey 1936) Double, midseason, very large. A full white, with fine, strong stems. Extra fine quality bloom. Mr. Kelsey thought enough of this variety to let it bear his name. We are indeed fortunate in having the originator's stock to offer. \$15.00
- Enchanteresse** (Lemoine 1903) 8.9 Double, very large and very late. White, with lemon tints in collar and crimson wire edges on a few of the central petals. Tall, floriferous with strong stems. Due to its late blooming habit, sometimes fails to bloom well. \$1.00
- Evening Star** (H. P. Sass 1937) 9.5 A rich, lively, double, glowing white, with occasionally a bloom showing a crimson edge. A splendid bloomer on long, stiff stems. This is a consistent prize winner at the shows and will make a fine addition to any peony planting. Its high rating indicates its value. Late bloomer. Stock rather limited. \$5.00
- Festiva Maxima** (Miellez 1851) 9.3 The old reliable white. A massive, early double white with crimson markings. One of the most generally planted peonies in cultivation. This variety was originated 95 years ago, but its sterling qualities in habit of growth and blooming make it most desirable. \$1.00
- Florence Nicholls** (Nicholls 1938) Late midseason variety. A lovely white with a pinkish center, general effect blush. Stock is still exceedingly scarce, and we are fortunate in having a good stock that will be offered next year. Not yet rated but we predict that it will get up in the 90's unless we are greatly mistaken. We are co-purchasers of the originator's entire stock. \$10.00
- Footlights** (Kelsey 1938) A large, double Mons. Jules Elie type. Broad, pure white, outer petals surrounding a closely packed ball of narrow, overlapping and entwined petals, enlivened by a golden glow that shines through from the depths. Total effect, a soft golden glow. Excellent. \$6.00
- Frances Willard** (Brand 1907) 9.1 Double, large, midseason. Opens a very pale pink, changing to white, with a yellow suffusion in collar. Shows faint red lines on edge of some center petals. Mildly fragrant. A variety that will give satisfaction each year. Heavy dark foliage. \$1.50
- Frankie Curtis** (Vories 1924) 9.3 This variety gives the impression of a white Standard Bearer as it is of rather dwarf habit. Flowers full double, opening a faint pink fading to white. Guards broad and evenly rounded, surrounding a high, globular, chrysanthemum-like center of incurved petals. Free flowering. Heavy dark green foliage. \$2.00
- Fred W. Pratt** (Kelsey 1935) Double. Pure white outer petals, inner petals yellow, overcast with pure white. Earlier than Primevere, which it resembles. Deeper shade of yellow at base of petals. Anemone center. \$3.00
- Gleam of Gold** (Sass 1937) A double, midseason variety. White guard petals with yellow petals intermingled in the collar. Good, strong stems. The narrow petals in the center are very brilliant deep-yellow, lighting up the flower and giving the bloom a very attractive appearance. The flowers are very large. Its name is adequately descriptive of its general color appearance. A lovely and most desirable origination. \$4.00
- Golden Dawn** (Gumm 1923) 8.43 A late, midseason double. White guards and bright yellow center. Stems excellent. One of the best "near yellows." We most emphatically disagree with the statement in the Peony Manual that it is impossible to distinguish this variety from Primevere or Laura Dessert. We have a grave suspicion the party writing up the description of Golden Dawn in the manual did not have the true variety before him. A novice could dis-

tinguish the identity between Golden Dawn and Laura Dessert. The former variety has longer central petals and is fully double, while Laura Dessert and Primevere are both anemone type. Laura Dessert has a brighter, more pronounced yellow center and does not fade as quickly. The same is true of Primevere. \$2.00

Grace Gedge (Kelsey 1934) Fully double, cream-white, flushed with a delicate shade of pink. Late bloomer. A flower of exquisite refinement. Resembles Nick Shaylor in color. \$5.00

Harry F. Little (Nicholls 1933) 9.42 Very large white with a faint blush of pink in the inner petals. When at its best a faultless flower. Awarded the Gold Medal of the American Peony Society for excellence. This variety not as well known as it should be, as the stock has been difficult to obtain. We are co-purchasers of the originators entire stock. \$5.50

Ivory Brooch (Kelsey 1943) Double, ivory white. Outer petals tightly incurved over a closely packed center. As the flower matures these outer petals still retain their slightly crimped and incurved formation. The total effect is a medallion like bloom, resembling a curved brooch of ivory. Formation very uncommon. The bloom always has a bud-like appearance. \$4.00

James Kelway (Kelway 1900) 8.7 Double, very large. Opens a very faint pink fading to almost white with age, but still retaining a slight flush on outer petals. Foliage good. Stems tall. \$1.00

John M. Good (Welsh 1921) 9.3 A large, midseason double. Outer petals very large, graduating smaller and smaller toward a flat open center which does not show stamens or carpels. Outer petals very pale pink at first, shading to ivory white or pure white in the center, illumined by a yellowish tint in the depths of the flower. Richly fragrant, tall, vigorous, stiff stems. Light green foliage. Requires some time to get fully established to have it at its best. \$1.75

Kelway's Glorious (Kelway 1909) 9.56 This peony is aptly named, as it is a glorious creation and a most popular white. There is a creamy diffusion in the depth of the flower, and occasionally there will be a few crimson edges on center petals. Strong, roselike fragrance. Free flowering with strong stems. A peony that is much sought after and admired. \$3.00

La Lorraine (Lemoine 1901) 9.17 One of the finest whites we have for the show table or garden planting. Cream white when first opening, with a faint touch of salmon pink. A very fine flower of excellent form on strong stems. A very free bloomer and always ranks among the very best at our annual exhibitions. Clean stock must be secured for best results. \$2.00

Laura Dessert (Dessert 1913) 8.8 When first opening, this variety is pale pink in bud, opening cream or pale yellow, becoming white. This is not a full double but an anemone type that many people prefer. This variety could well be classed with the yellow group sometimes offered. While not yellow throughout, the large center of yellow carpels gives it that general appearance. Moderately fragrant. \$2.00

Le Cygne (Lemoine 1907) 9.42 One of the highest rated whites, tinged ivory when opening. Full double, very early blooming variety. Moderately fragrant. Foliage large, dark green. For years this was the highest rated peony. Will be found in any large planting. \$3.25

Louis Barthelot (Doriat 1927) This is a sulphur white variety that is not in general commerce. A more detailed description to follow as soon as we can check variety in the field. \$3.00

Lois Kelsey (Kelsey 1934) While this variety is listed as a double we would not class it as such. A midseason, flat flower, with long, narrow, deeply cut petals extending from the center like rays of the sun. Something out of the ordinary if you prefer odd peonies, as it is distinctly unusual. Has the appearance of a flower not fully transformed or constant, although it does come the same every year. Looks something like a cactus dahlia. **\$2.50**

Luxor (Sass 1935) An early, double variety. Immense white with true bomb center of pale yellow which soon fades to white after opening. Good stems of medium height. **\$3.00**

Marie Jacquin (Verdier) 8.3 Loose, double type, large, midseason variety. Guard petals are broad and white, enclosing an almost perfect white water lily center that is very attractive and appealing. There is a large cluster of yellow stamens in the center of bloom. Medium height and a profuse bloomer. Under good cultivation, the bloom is nearly double. Without disbudding, it produces a splendid decorative effect, as the flowers come in large clusters. Must be disbudded for show flowers. Delightful and exciting for floral arrangements. **\$1.50**

Marie Lemoine (Calot 1869) 8.5 A late, very large, double white, with shades of crimson on some of the edges of petals. The whole flower is strongly suffused with yellow from hidden staminodes. Very fragrant. Rather dwarf growing habit. Be sure to secure clean healthy roots for results. Considerable unhealthy stock of this variety has been disseminated. **\$1.00**

Mary Auten (Auten 1933) 9.41 This is a late, flesh white peony of much merit. Mr. Auten considers this one of the best of his many originations and named it in honor of his daughter. Stock still scarce and the demand should greatly exceed the supply. **\$7.50**



Harry F. Little



Le Cygne

Marilla Beauty (Kelsey 1940) A new beauty not yet rated officially. A large blush-white double of bewitching loveliness. A late bloomer of rare charm. The blush coloring is more pronounced toward the center of bloom, radiating to a lighter shade. We saw the original plant of this variety and it was breath-taking. It's just one of those varieties you feel that you must have in the garden. A wonderful show bloom that will hold its own with the elite of the peony world. The large, broad petals have wonderful substance.

\$15.00

Mary B. Vories (Vories 1924) 9.07 A very lovely double midseason. Large, creamy white with a great deal of class. Fragrant. An excellent, lovely white that is outstanding.

\$2.50

Mary E. Nicholls (Nicholls 1941) This variety too recently introduced to be officially rated. A grand white peony similar to Kelway's Glorious and any peony that can achieve that distinction has really gone places. Col. Nicholls is a keen judge of peonies and has chosen this one as outstanding. You will be fortunate, indeed, if you get one for your collection. Stock is still scarce but we will be able to accept orders for a limited number.

\$20.00

Mel Gedge (Kelsey 1937) For those who worship bigness, this flower satisfies that ambition. A huge, milk-white double that unfolds into a charming globe of loveliness. Rarely do you see such size and beauty so skillfully combined. Early, midseason bloomer.

\$5.00

Miss Innocence (Kelsey 1936) Double, flesh white flowers. Fragrant. Dainty 7" blooms, loosely formed. Broad outer petals becoming smaller and incurved as they reach the center bloom. Perfectly formed, early midseason bloomer.

\$5.00

Mont Blanc (Lemoine 1899) 8.4 Double type, early midseason, very large. Open white with creamy center, developing almost to a globular form and proceeding to become a flattish, large cylindrical flower with a faintly pink center and a very few very fine red lines on some of the central petals. Faint fragrance. Medium height and strong stems. Ruddy foliage.

\$2.00

Mother's Day (Kelsey 1936) Double, midseason, very tall, clear white. This is an exceptionally fine peony and one of the best we have seen. A gem of the first water. It is impossible to view this peony without being greatly impressed with its beauty and stateliness. We consider this a glorified Elsa Sass, if such a comparison is possible. The long wiry stems and the clear white charmingly shaped blooms that come in profusion every year make this an ideal cut-flower. We are the co-purchaser of the entire originator's stock.

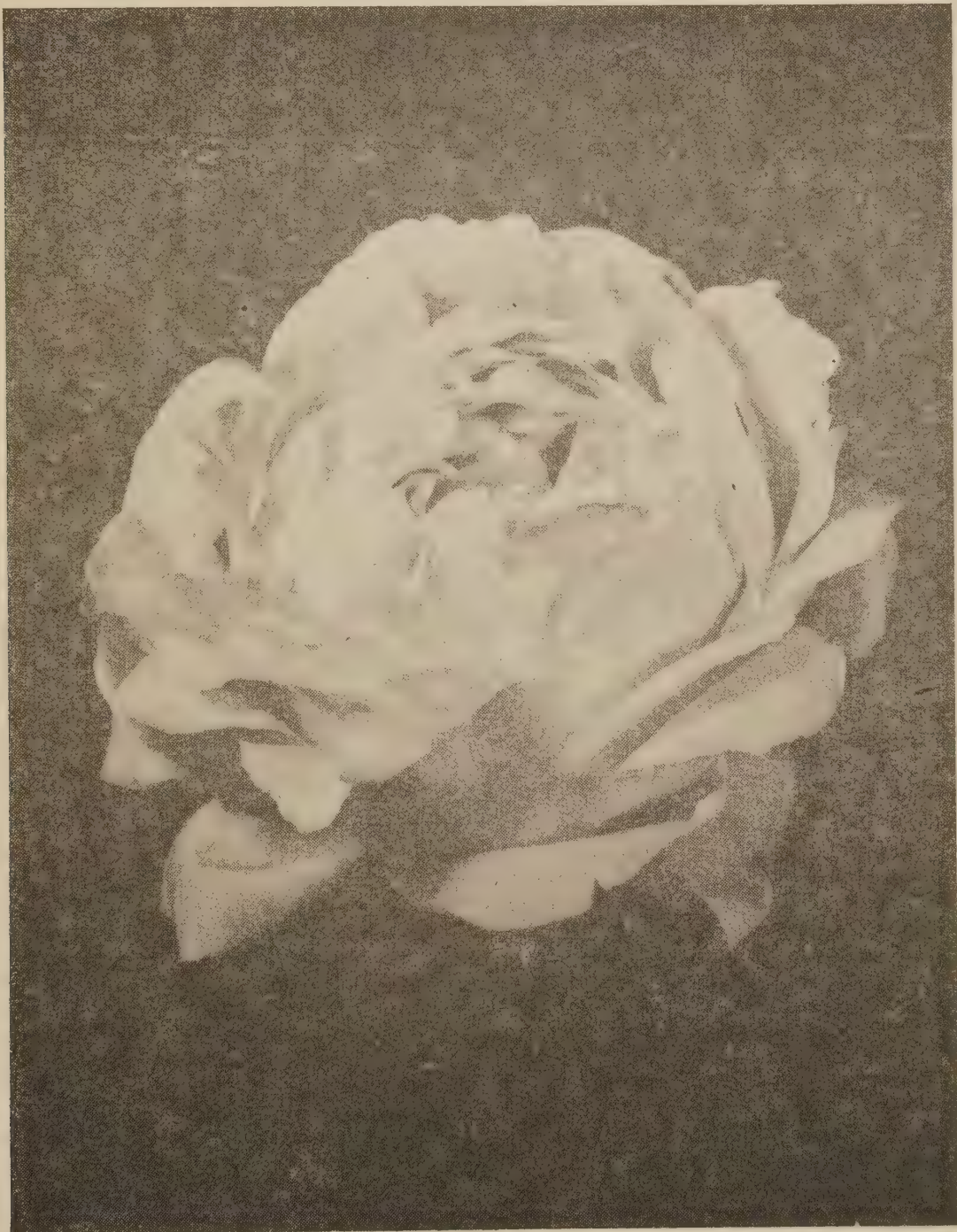
\$10.00

Moonglow (Rosefield 1939) Double, late midseason. General color is white with a pale glow of moonlight spreading over the entire flower. Wide petals of beautiful form. Plant very neat in appearance. A flower of exquisite refinement. **\$6.00**

Mrs. A. M. Brand (Brand 1925) 9.04 Full double type, very large,. A clear, white flower of splendid form. Guards broad, and slightly differentiated; center composed of broad, graduated petals of remarkable substance. This is a late blooming variety and pleasingly fragrant. Awarded Gold Medal of the A.P.S. in 1923, and many awards since that time. **\$5.00**

Mme. Jules Dessert (Dessert 1909) 9.4 Double type, very large, midseason. Long, smooth petals of flesh white. A few stamens show in the depth of the flower. Tall, very floriferous. Lovely to look at. **\$1.25**

Mrs. A. B. Franklin (Franklin 1928) 9.28 A large double, pure white, compact, rose-type bloom of much beauty and refinement. Much like a large white rose. A sturdy, upright grower. Late bloomer and winner of many awards, including First Class Certificate of A. P. S. **\$3.00**



Mrs. F. D. Roosevelt

- Mrs. Edward Harding** (Shaylor 1918) 9.3 A large, midseason double that has had a great deal of publicity due to the fact that it was originally introduced at \$100.00 per division. A number were sold at that price. Medium height, free flowering, stiff stems, excellent foliage. Due to most intensive propagation by the originator, the vitality of this variety was weakened and got off to a rather bad start. Took several years to make complete recovery. **\$1.50**
- Mrs. Frank Beach** (Brand 1925) 9.0 A very large, late, creamy white flower, fully double. Plant is rather dwarf growing, but the stems are stiff and sturdy, holding the flower erect. A very good addition to any planting of the better peonies. **\$3.50**
- Mrs. J. V. Edlund** (J. V. Edlund 1929) 9.1 A wonderful show flower, large pure white of perfect form. A hard one to beat on the show table and a runner up at annual peony shows for highest honors. As a show flower it is unsurpassed. Although introduced some years ago stock is still scarce due to heavy demand. Fragrant. This variety always prominently displayed at Minnesota peony shows, its native state of introduction. **\$6.50**
- Nancy Nicholls** (Nicholls 1941) A grand white with a pink suffusion at the center of bloom that is most artistic. Here is a variety really worth while and we are indeed fortunate in having a good stock to offer direct from the originator's garden. This is one of the new, fine peonies still unrated. Watch for it at the shows and you will be impressed with its beauty which is very appealing. **\$8.00**
- Nell Shaylor** (Shaylor 1919) White and gold perhaps adequately describe this variety as far as color is concerned. Rather a dwarf grower and exceedingly floriferous. Flower rather roughly formed. **\$1.00**
- New Era** (Franklin 1939) Not yet officially rated. This can be termed a pure white Mons. Jules Elie, which it resembles. On the broad, rounded, white guard petals rest a giant white "mum." Guards are prominent as the flower opens, but the central bomb brightens and expands to form a perfect Mons. Jules Elie in glistening white. Midseason bloomer. **\$3.00**
- Nimbus** (Andrews 1923) 9.03 Double, full deep flower of palest rose fading to white. Late bloomer. Tall growing. A very distinguished flower. This will make a fine addition to any peony planting. **\$2.00**
- Nina Secor** (Secor 1921) 9.0 Double type, medium to large; midseason. Pure white with yellow glow in depths. Fine crimson edge on a few of the central petals. Guard petals are splashed with maroon. Average height. Very floriferous. Foliage narrow, incurved and dark green. Stems need support for best results. **\$1.50**
- Odile** (Doriat 1928) 9.1 Double, late midseason. Ltrge white sphere with lilac tinted center. This is a fine peony and make no mistake about it. Worthy of any garden planting and it is also a fine show flower. Another fine French origination. **\$5.00**
- Party Gown** (Kelsey 1942) Very large, flesh white double. Full petaled rose formation. Profuse bloomer on strong stems. Faintly fragrant. To see it in full bloom makes it a "must have." You can be most liberal in the use of superlatives on Party Gown and not fully describe it. Loveliness well dressed with freshness and charm. **\$5.00**

- Primevere** (Lemoine 1907) 8.6 One of the near yellow Chinensis peonies that hybridizers have been working on for years to obtain a real, full, double yellow. Anemone type of medium size. Midseason bloomer. The flower is rather flat, with creamy white cupped guards, rarely showing spots of red. Center composed of short, narrow petals of canary-yellow, becoming light with age. Fragrant. Good dark green, rather coarse foliage. When well grown from good, healthy stock, stems are ample to hold the bloom erect. **\$1.25**
- Rare China** (Kelsey 1935) A semi-double midseason variety. A lovely flower of blush white with five or six rows of guard petals surrounding a large center of yellow stamens, charmingly arranged like a beautiful China plate with a touch of red and gold in the center. Seems to grow more beautiful daily. Resembles Minnie Shaylor in general makeup. A ceramic in petals. **\$8.50**
- Rare Etching** (Kelsey 1939) Double white, rose formed bloom. Delicate shades of pink and gold in center. Extremely beautiful in form and petal arrangement. Musk odor. Late midseason. Well named. Ultimate refinement in formation, bloom and coloring. **\$8.00**
- Resplendent** (Franklin 1931) 8.98 Here is an immense white, fully double that appears in late midseason. A very fine variety of real merit. Stock limited. Its name is well chosen. **\$10.00**
- Reverend H. N. Tragitt** (Brand 1928) 9.0 Medium size, pure white double. Rose formation. This is a good one and not as well known as it should be after being on the market so many years. Its high rating indicates its worth. **\$3.00**
- River Mist** (Kelsey 1936) Double. Medium sized ivory white. Edges of central petals marked with fine wire edges of carmine. This color, not like occasional splashes of red on Festiva Maxima, is a circular pattern that is on all blooms. The wire edge is fine and is an intense red. Late midseason. Fragrant. Those who like the red on white will delight with this variety. Grows quite tall. **\$5.00**
- Shirley** (Kelsey 1934) Very large. Flesh-white double bloom, splashed in center with carmine. Ring of yellow stamens showing. Long strong stems. Midseason. **\$4.00**
- Silver Chalice** (Kelsey 1935) A very delicate blush-white or delicate pink. Gold stamens. Shows carmine on some edges. Faint fragrance. High built crown, cup shaped like a silver cup with red wine in it. Very beautiful. **\$5.00**
- Snow Ball** (Franklin 1935) 8.95 Double, late midseason variety. A perfect ball of white. Very dependable and desirable. You will like this one. **\$2.50**
- Snow Brook** (Kelsey 1936) Double, flesh-white. A symmetrical dome of clean, neatly arranged, petals. Slightly fragrant. It is big if you measure it in any way, particularly in height. Makes a spot in the garden that you will return to time and again. **\$5.00**
- Snow White** (Little 1938) A very tall, midseason medium sized bloom of pure white. Awarded American Home Achievement Medal for outstanding merit. Stock extremely scarce. **\$6.00**
- Solange** (Lemoine 1907) 9.27 Here is a beauty that takes a long time to make its appearance from the opening bud. The petals are so densely packed, they produce the effect of two or three flowers trying to develop from one bloom. Color creamy white with a suffusion of buff and pale salmon pink. It takes so long to open that unfavorable weather often spots the bloom. It is so beautiful that additional precaution would pay big dividends in charm and beauty of the finished bloom. As with many of the Lemoine varieties, this one must be observed for healthy stock. Listed with the very finest peonies grown due to its distinct coloring. **\$2.00**

- Starbright** (Kelsey 1936) Double white. Flowers not large but charming. A very worth while variety. A more detailed description after the 1948 blooming season. **\$4.00**
- Stillman** (Kelsey 1937) Cupped shaped white with white guards. Very neat yellow center of narrow petals. This variety will be checked this year for fuller description. **\$5.00**
- T. E. Carpenter** (Brand 1942) Double, late, pure ivory, heavily shaded yellow with sometimes a hint of blush. Rounded petals arranged in perfect circles. Color very similar to that of Solange. Looks like a real find. Stock extremely limited. **\$8.00**
- The Fleece** (Kelsey 1936) A big, full petaled, fleecy double white with green gold at base of petals. Flowers are very large and fragrant. Stems strong, with light green foliage. Medium height. A strong contender for first honors among the whites. Received Honorable Mention at the A. P. S. Syracuse show. **\$6.00**
- Thura Hires** (Nicholls 1938) Large petaled white with a heavy overlay of lemon yellow. Late midseason bloomer. When first opening the yellow is decidedly apparent. In another year we will have a fine stock of this variety to offer, direct from the originator's garden. A very lovely creation that you will want to add to your collection. **\$7.50**
- Titania** (Kelsey 1936) Very large glistening white with yellow stamens. Semi-double. Some full double. **\$5.00**
- To Kalon** (Kelsey 1936) Double late-midseason. A pure white of real exhibition quality. Mr. Kelsey's description follows: "Gold, overlaid with silver and wrought into a perfect arrangement of petals, that's To Kalon. It is distinctive on account of the golden tones coming from the depth of the flower. Bloom, large, rose formation, midseason, semi-dwarf, good strong stems with dense foliage to the ground." Mr. Kelsey chose the Greek name To Kalon, meaning "The Beautiful." **\$10.00**
- Trinket** (Nicholls 1941) Double, midseason. A small glistening white with deep yellow underglow. Stiff stems. Medium height. Truly a gem. We have a fine stock of this variety to offer our customers. **\$3.00**
- Victory** (Thompson 1945) Too new for official rating, but we predict it will be among the highest-rated peonies we have. We are not alone in this opinion. First introduced and sold in 1945. This peony is now planted in many sections of the country, and we expect to get most satisfactory reports on its performance. A full double, exquisitely formed flower of pure white, with no markings. Opens a deep ivory, deepening to pink tones toward the center of bloom. Good, stiff, strong stems with remarkable substance of the petals that is equaled by a few and excelled by none. Grows 42 to 45 inches in height. One of the most outstanding creations in recent years. Due to the extreme excellence of this variety and scarcity of stock, the price will remain high for a number of years. **\$20.00**
- Ward Welsh** (Neeley 1929) 8.73 A double, late, ivory white that is very attractive. Some years it does not open freely and this fault is reflected in the rating it carries. Late opening varieties are often damaged by thrip infestation which is no fault of the flower. **\$3.00**
- White Beauty** (Auten 1931) A very lovely midseason double, exquisitely pearly white in color. Stems are strong and the bloom is freely produced. Very aptly named. Stock still scarce. This is a lovely creation and worthy of any fine planting. **\$1.50**

- White Delight** (Auten 1935) Very early double white. Has a very marked rose fragrance. A most pleasing introduction by Mr. Auten and very aptly named. **\$2.50**
- White Shrine** (Kelsey 1936) Double white with dashes of red. Outside petals pure white. Central petals pink and yellow with greenish tints at base. Early. **\$4.00**
- White Water** (Kelsey 1942) Very large, open petaled white. A row looks like the spume on the Niagara Rapids above the falls. Good stems. Golden glow at base of petals. 8" blooms not uncommon. Satisfying both in bigness and beauty. Large enough to suit all; beautiful enough to suit the most critical. **\$8.00**
- Williston** (Kelsey 1936) Large white double with extra strong stems. Rose formation. Late-midseason. Very desirable. None for sale this year.
- W. F. Christman** (Franklin 1921) 8.8 Full rose type, medium size, midseason variety of much grace and refinement. Don't let the rating fool you. Large outer petals of blush-white shaded with delicate pink, especially on the outside, cupped, waved and held horizontally. Center petals somewhat narrower and incurved at first, opening to a true rose form, with small petals deep in the heart. The whole bloom flesh-white, suffused with pale rose-pink. A few petals edged with crimson. Delicate and most pleasing fragrance. Medium height, free flowering, good foliage. **\$1.25**
- W. L. Gumm** (Gumm 1929) 9.34 A double, midseason, beautiful white, built up on medium height stems. Petals have heavy texture and the bloom is excellently formed. Center of bloom shows an ivory white sheen that adds to the beauty of the flower. Very refined and greatly admired in the show room and garden. Stock limited. **\$5.00**
- Youth** (Kelsey 1935) Large double, blush white, with ivory tones at base of petals. Good stems and foliage. **\$2.00**

LIGHT PINK PEONIES

In this group will be included some flesh, salmon and lavender pinks, which are grouped in a general light pink class. It is impracticable to try to group each separately.

- Adonis** (Sass 1930) Double, midseason, light pink with a yellow collar. One of the best and most beautifully colored of this type. Pale pink petals appearing suffused throughout the yellow collar. Stock scarce. Stems strong and hold the flowers erect. This is really a fine one. **\$2.50**
- Alberta Kelsey** (Kelsey 1937) Sdlg. K-8. Double. Delightfully fragrant. Light rose pink. Gold tipped petals interspersed among the neatly cupped petals. Medium sized flowers. One flower is a bouquet. Combines beauty of petals and a delightful perfume. Early midseason. **\$4.00**
- Anna Sass** (Sass 1930) 8.76 Double, late midseason. Very beautiful, delicate light pink, toned orchid. Profuse grower on tall stems. **\$1.50**
- Blush** (Nicholls 1941) Here is a peony that is unusually attractive and appealing to the eye. The delicate flesh coloring greatly adds to its effectiveness when used in flower arrangements. Flower of medium size held stiff and erect on wiry stems. A very lovely peony that appeals to all. Color holds well. **\$5.00**
- Chief** (Franklin 1931) 9.00 Double, late, midseason. Very large, light pink. Fragrant. Received First Class Certificate of A.P.S. for outstanding merit. Very much worth while. **\$4.00**

- Claude Barrow Jr.** (Kelsey 1939) One of the largest and finest flowers in the garden. Double pink, informal shape. Very desirable. The above is Mr. Kelsey's own description. A profuse bloomer. Long, very large, pointed buds. A show flower. **\$10.00**
- Coral Isle** (Kelsey 1939) Semi-double, late. **Real coral** color. Makes a striking color splash. Nothing like it in the garden. A real break in peony color. A limited stock this year. **\$5.00**
- Coral Queen** (H. P. Sass 1937) Not yet rated. Formerly known as seedling 6-27. A full double, late, low growing, rose-type, blush-pink, slightly deeper in center. Not nearly so deep a pink as name would indicate. A very outstanding flower in its color and a fine exhibition sort. **\$5.00**
- Cornelia Shaylor** (Shaylor 1919) 9.1 A late, large double type, high-built blooms with immense guards of pale rose and a collar of flesh white, with a slightly darker shade in the center of the compact, roselike center. Has a faint fragrance that is agreeable. Dark, glossy foliage. As with most of the very light pinks, this one will fade to white with age. Large and beautiful flower that is much admired in our planting. **\$1.50**
- Cornelia Stone** (Gumm 1929) 9.05 Double, midseason. A charming light pink of splendid form. This variety not as well known as it should be. We have a limited stock to offer our customers. **\$5.00**
- Daisy Sherk** (Kelsey 1938) Large, flesh-pink double. Open center of light pink. Outer petals flesh white. Large bowl shaped flowers. Unusual in form and color combination. Midseason. **\$3.00**
- Dorothy J.** (R. H. Jones 1937) Full double, deeply built, globular flowers of large size. The guard petals give it its wonderful form. The color is a soft, even shade of delicate pink. Silver Medal winner at Rochester, Minn., June, 1940, Show of the American Peony Society. This peony has maintained its high rank since introduction and we are glad to be privileged to offer it this season. Late midseason bloomer. Stock rather limited. **\$15.00**
- Dr. O. M. Skinner** (Kelsey 1936) Double, medium sized, shell pink. Late midseason. Symmetrical and very lovely. **\$3.00**
- E. C. Shaw** (ThurLOW 1919) 9.10 Double type, large, late midseason. A lovely old-rose, with flesh-pink tones in center and collar and occasional red edges on outer petals. Possesses a very pronounced and agreeable fragrance. Good foliage. Medium height. Texture very translucent, giving the flower an artistic touch. **\$1.50**
- Edith Scovell** (Franklin 1928) 8.70 Double, late variety. Dwarf, medium rose-pink. Due to its habit of growth it fits in well with landscape plans. **\$2.00**
- Elisa** (Dessert-Doriat 1922) 8.98 Color hydrangea pink. A perfectly formed, cup shaped flower of medium to small size. Stems good and of medium height. **\$1.50**
- Ella Lewis** (Lewis 1925) 9.04 A midseason light pink variety producing good, sturdy stems which hold the flowers erect. While originated several years ago the stock is still scarce. The rating indicates that it is desirable. **\$10.00**
- Elwood Pleas** (Pleas 1900) 8.7 Flowers flat, with many crinkled petals symmetrically arranged. Color a pale rose-pink, changing to light flesh-pink in center. Possesses a slight odor. Medium height with stiff stems. Good bloomer. **\$1.00**

- Elizabeth Huntington** (H. P. Sass 1930) 8.98 An early double, loosely formed, pale pink with stamens showing. Tall and imposing. An exquisite flower appealing to the eye. **\$1.75**
- Evening Glow** (Hollis 1907) 8.3 Semi-double type, large and early. Large shell-pink, fading to white and pale old-rose. Fragrance not notable. Tall, very floriferous with erect stems. While originated many years ago it is still a very beautiful variety. **\$1.50**
- Exquisite** (Kelway 1912) 8.5 Double type, large midseason. Bright rose-pink paling toward tips. Flat flowers with poor fragrance. Good stems and foliage. **\$1.50**
- Florence Macbeth** (H. P. Sass 1924) 9.2 Pale shell-pink, deepening toward the center. Very full double. Opens rather flat with shell-like outer petals, illuminated by a golden glow in the depth of the flower. Slightly fragrant. Moderately tall. Strong grower with good foliage. **\$1.50**
- Flower Girl** (Auten 1935) 9.27 This beautiful variety is one of the good ones Mr. Auten has offered us among the many produced. A very early, flesh-white double that is pleasing to the eye, both in the garden and when in competition on the show table among the very best in its class. As near perfection as we usually find, and one that will make you stop in your tracks to admire. A real beauty. **\$6.50**
- Frontier** (Kelsey 1941) Large, light-pink double. Very late. Very full petaled massive bloom and pink in color. This is a variety of considerable merit. Particularly valuable on account of the lateness of the variety which considerably extends the blooming season. A "honey" and you will want to add it to your collection. **\$10.00**
- George W. Peyton** (Nicholls 1938) 9.43 A late, flesh colored peony of outstanding merit. We have grown this fine peony for the past few years and have been much impressed with it. Mr. Peyton is an acknowledged authority on peonies. We think you will like it sufficiently well to add it to your collection. There is a pinkish-blush tone in the flower that adds to its beauty. Fully double, good stems, medium height. **\$7.50**
- Grace Batson** (Sass 1927) 8.88 A midseason, medium pink variety that has met with most favorable acclaim by peony fanciers. Full double, good strong stems that hold flowers erect. Mr. Sass has originated some fine peonies in the past and considers this one of his good originations. **\$1.50**
- Grace Kelsey** (Kelsey 1935) Double, midseason, a bewitching shade of pink that Mr. Kelsey says is almost identical with Mrs. Livingston Farrand. Flowers large, fragrant and holds color well. Huge size. Good stiff stems, holding the flower perfectly erect. Mr. Kelsey named this variety in honor of his wife and if it were not a good peony it would not have received that honor. **\$10.00**
- Grandiflora** (Richardson 1883) 8.8 One of the latest peonies to bloom in the garden and for that reason very desirable to extend the season. A bright pink, double, flat bloom, that attains a very large size. The fragrance is very pronounced, but not particularly pleasing, according to our standard of smell. **\$1.00**
- Guidon** (Nicholls 1941) A lilac pink of good depth that Col. Nicholls selected from his many seedlings for introduction. Too new to have a rating but it should have a good one. You will hear more of this in the future and it should be shown at future peony shows more generously. Only a limited number to be offered this year. **\$5.00**

- Hansina Brand** (Brand 1925) 9.04 A lovely, glistening flesh pink with a salmon reflex shading toward the base of petals. This variety has been a consistent winner at national and local peony exhibitions and is most dependable, giving a splendid performance every year. A late bloomer, and as the flowers fade they resemble a perfectly formed specimen of Solange, it never fails to produce fine flowers. A "must have" for any fine planting of peonies. \$5.00
- Hans P. Sass** (H. P. Sass 1939) 9.19 Mr. Sass has brought out some outstanding peonies, and when he selected one to bear his name it is quite evident it must have been desirable in every way. A very large, late, rich satin blush-white, suffused shell pink, illuminated with an inner glow that is indescribable with words. Must be seen to fully appreciate its beauty and refinement. A very consistent and free bloomer. \$5.00
- Harry L. Burden** (Neeley 1930) 8.93 A double, midseason, light-rose pink that is much admired in our planting. Very good form with good strong stems, with the added inherent quality of being a free bloomer. This attribute makes it well worth while. \$2.00
- Hazel Kinney** (Brand 1925) 9.0 Double type, large midseason variety. Light, fresh-pink, with broad petals symmetrically arranged. This is one of the thirteen (\$50.00) peonies introduced by Mr. Brand in 1925. A very charming variety. \$2.50
- Henry Avery** (Brand 1907) 8.8 This variety has always been interesting to us. A double type, large, late. Guards and well defined crown a bright, light pink with a collar of creamy petals tinted yellow at base. Mild, pleasing fragrance. Good stems and foliage. A very attractive and lovely creation. \$1.50
- Irving Flint** (Kelsey 1935) Late-midseason, double pink. Richly fragrant and lovely. Resembles Le Cygne in form. Medium sized bloom. Light green foliage. Holds form and color remarkably well. Rich, both in color and odor. \$10.00
- James Boyd** (Thurlow 1919) 8.9 Double type. Large and late. Flesh-pink, tinted cream and buff in center. Blush white with age. Delightful fragrance. Upright habit with stiff stems. A very good peony. \$1.50
- Judge Berry** (Brand 1907) 8.6 Very large and double, light-rose pink of an even shade with flesh tones in center, brightened by vivid yellow stamens in center and collar of flower. Medium height. One of Mr. Brand's very good introductions but due to its early blooming season, rarely seen at peony shows. Slight fragrance. \$1.50
- Judge Snook** (Good & Reese 1930) 9.23 A late midseason variety that is one of the worthwhile originations as indicated by its rating. The bloom is large and by some it is listed as cream white. This is doubtless the result of fading of the true color when first opening. \$5.00
- Katharine Havemeyer** (Thurlow 1921) 9.0 Double type, large midseason. Color is a light rose-pink with a tint of old rose. Mild rose fragrance. Average height, excellent stems and very floriferous. Awarded Certificate of Honorable Mention, London, Ont., June 16, 1922. \$2.50
- Lady Alexandra Duff** (Kelway 1902) 9.1 A lovely creation, much admired in any planting. To get very satisfactory results, do not disbud too generously, as the lateral buds will greatly prolong the season of bloom. Of course, if they are desired for show purposes, they must be disbudded. Blooms are borne in clusters, and with smaller, saucer shaped side flowers. Stems strong; foliage abundant. Very artistic. \$1.50
- Lancaster** (Kelsey 1937) Medium pink, double. Semi-dwarf, midseason. Large, heavily petaled, stiff stems. \$8.00



Mission Gardens Peony Fields

Lake O'Silver (Franklin 1920) 8.1 Double type, light pink, silver tipped, giving a shimmering effect in the breeze that gave it its name. Golden anthers prominent throughout the flower. Central petals dark pink. Very good landscape variety.

\$1.50

Laura Kelsey (Kelsey 1941) This variety was formerly named Myra Hess. Fully double, midseason, long pointed buds that open out large, fluffy, delicate light pink flowers, fading lighter with ivory tints at base of petals, some tipped and others splashed with carmine. Blooms simply immense, 7½ to 8 inches in diameter. A very charming flower with strong stems. A variety that should be added to every collection. A limited number to be offered this season. Defies wind and driving rain due to stiff stems.

\$15.00

Laura Treman (Nicholls 1943) Double midseason, large blush with fine form. Medium height. This is a new one, little known and we are fortunate in having a fair stock direct from the originators gardens.

\$5.00

Laverne Christman (Brand 1925) 8.91 We believe this variety should have a higher rating. When Mr. Brand made his outstanding display of \$50 peonies at the National Peony Show in St. Paul, Minn., in 1923, Laverne was given the liberty of selecting one to bear her name. She chose this variety, which resembles a very good Therese in color, form and general makeup, but comes into bloom much later in the season. A large flower of rose type, loosely formed, with long, broad petals. In color it is a deep, rose-pink, shading lighter toward the edges. Plant tall and vigorous. A flower of much grace and refinement in structure. Stock rather limited.

\$3.00

Little Buffalo (Kelsey 1939) Miniature, semi-double. Pink. Very interesting due to its dwarf growing habits. Slender, red stems. Early, midseason bloomer.

\$2.00

Lottie Dawson Rea (John L. Rea 1939) Double, midseason. A very trim flower of light pink with exquisite tints. Received Honorable Mention Certificate of the A.P.S. Stock still very scarce and too new to be officially rated.

\$15.00

- Lucy Dunn** (Kelsey 1942) Big double, light pink. Attractive in bud and half-opened flowers. **\$2.00**
- Lulu Little** (Little 1938) Late midseason, light pink. Mr. Little, who originated this variety, is one of our most able peony authorities and a noted judge of peonies, selected this variety from his seedlings and gave it his daughter's name; something he would not have done had the peony not possessed real merit. Stock very limited. **\$10.00**
- Marietta Sisson** (Sass 1933) 9.02 Midseason, light pink double. A very loosely built flower that is very attractive. Stems good and held rigidly erect. Another of the good Sass originations. **\$3.50**
- Minerva** (Sass 1930) 8.94 Symmetrical white flowers with a hint of pink that is very entrancing and lovely. This variety might properly be classed with the whites as the pink is not very pronounced. Flower is large and has good substance. **\$2.00**
- Minnie Shaylor** (Shaylor 1919) 8.9 Semi-double type, large, midseason variety. This is a charming flower with several rows of fluffy, crepe like petals of clear, light pink, serrated at tips near center. Stamens very prominent. Anthers golden yellow with paler filaments. A very lovely flower that is simply stunning in the garden and landscape. **\$2.00**
- Minuet** (Franklin 1931) 9.19 It richly deserves this rating. Very large, full rose type. Color, a most pleasing light pink. Stiff stems, strong grower, reaching 50 inches in height, with foliage to the ground. A grand cut flower, as it has splendid keeping qualities. A recent introduction of Mr. Franklin that has received numerous awards and a variety that has truly outstanding merit. **\$4.50**
- Mme. Emile Galle** (Crousse 1881) 8.5 Double type, large and late. Very large, rose pink which is more strongly defined in the center and without crimson markings. Fair rose fragrance. Very delicate color and texture. Medium height and free flowering. Good stems and foliage. **\$1.50**
- Modella** (Betscher 1920) 8.8 Double type, large, midseason variety. Uniform light-pink guards, wide and evenly rounded, distinctly differentiated from the short, irregular, creamy collar that surrounds the broad petals which graduate to a cupped or rose-bud center. Delicate, sweet fragrance. Medium tall, upright, strong stems. Good healthy foliage. **\$3.00**
- Moonstone** (Murawska 1942) Here is a recent origination that has made a favorable impression on peony lovers. A midseason double, perfectly formed blush pink that is especially attractive in transmitted light. Its name indicates its coloring. Stock still very limited. Very much worth while. **\$10.00**
- Mother Ross** (Kelsey 1935) Double. Medium to large bloom. Very delicate pink outer petals. Pink in center. Good stems. Petals symmetrically arranged forming a lovely bloom. **\$4.50**
- Mrs. Fern Lough** (Gumm 1930) 9.17 Double, delicate pink, midseason bloomer. Color is similar to Tourangelle but infinitely better. Good foliage and stiff, strong stems holding the flowers erect. This variety possesses charm of high order. **\$5.00**
- Mrs. Franklin D. Roosevelt** (Franklin 1933) 9.4 The rating on this peony has gradually climbed, attesting to the worthiness of this beautiful creation. We believe this to be one of Mr. Franklin's most outstanding contributions to the peony world. The flower is artistically formed, with extremely long, loose petals of soft pink. A splendid grower with excellent blooming habit. Its huge size,

- form and color combine to make it most attractive and it will grow in popularity when better known. A grand exhibition bloom. \$5.00
- Mrs. Harry F. Little** (Little 1936) 9.27 A late, flesh-pink that is very enticing and most desirable for any good planting of peonies. Stock very scarce at present and we only have a limited amount to offer. A more complete description of this variety will be compiled after this blooming season. \$20.00
- Mrs. J. H. Neeley** (Neeley 1931) 9.22 Late, flesh-pink. Good strong grower and a most desirable origination. We are now able to offer this peony to a few peony enthusiasts who want the best. Only a small number of divisions available this year. \$4.50
- Mrs. Livingston Farrand** (Nicholls 1935) 9.36 We consider this one of the most outstanding originations, as far as color is concerned, that has been introduced in many years. A double, late-midseason variety. Large, well formed flowers of the purest pink yet seen in Chinensis peonies. A really sensational flower that is outstanding in the showroom or home garden. If Col. Nicholls had only originated this one variety, he would have left to posterity a living monument to his genius. Very fortunately, he has brought out several equally outstanding creations, some of which we are offering you in our list, and others will appear when available in some quantity. \$15.00
- Mrs. W. C. Otis** (Otis 1939) Double, large, light pink. Fine formed flower that received an Honorable Mention Certificate of the A.P.S. One of two varieties introduced by the late W. C. Otis. Stock extremely limited and only a few to offer. \$5.00
- Myrtle Gentry** (Brand 1925) 9.06 A beautiful, late, light pink that fades to nearly pure white with age. We consider this one of Mr. Brand's finest creations. Gives a splendid account of itself wherever grown. Delightful tea rose fragrance that is entrancing. A perfect rose form flower, with great, broad, nicely rounded petals of wonderful substance. Tints of flesh and salmon show throughout the petals. Splendid grower with heavy foliage. The foliage is a rich, dark green and exceedingly attractive. This variety has instant appeal and allure and is much in demand. Dependable and satisfactory in every way. As near an ideal creation as one would wish. \$3.00
- Nancy Bonner** (Kelsey 1938) Light pink double with five V shaped red wedges on the central edges, which are divided, forming a butterfly pattern. Fragrant. Late midseason. Odd and unusual. \$4.00
- Nancy Dolman** (Vories 1924) 9.1 Double type, very large and late. Pale rose-pink of conical shape, with fluted, fluffy petals, becoming pinkish white in center. Tall, robust grower with stiff stems. Poor odor. One of the big fellows. \$2.50
- Nick Shaylor** (Shaylor 1931) 9.35 A most outstanding beauty and one much sought after. Double, late, blush or light pink, with occasional red markings. Some years these markings are more prominent than others, indicating weather conditions influence this characteristic. Very fine form, good plant growth and does well in all sections of the country. To be found in most high-class exhibits competing with the best of them for supremacy in its particular color class. No fine collection complete without it. \$5.00
- Opal** (Pleas 1908) 8.5 Double type, large midseason. Pale rose pink becoming almost white when fully open. Petals long pointed and arranged in a deep funnel-like form. As the name indicates the coloring is very delicate and opalescent. \$1.00
- Ottawa** (Kelsey 1935) A double, rich pink shading lighter at base of petals. High built crown. A very good variety but little known. \$8.00

- Pastel** (Nicholls 1941) Here is a charming peony very aptly named. Color a fine salmon pink. This is one of the new ones and little known to the general public. The stock we are growing is direct from the originator's garden. Not as yet rated, but we predict that the rating will put it in a class with the good ones. The pleasing, delicate coloring is most attractive. **\$5.00**
- Patrician** (Kelsey 1936) Double. A beautiful variety hard to describe. Pink guard petals turning lighter at base, shading toward crown with a deeper pink. A charming combination of colors. Midseason bloomer. Stems medium height and strong. Light colored foliage. **\$8.00**
- Peach Blow** (Shaylor 1938) 8.98 A very early bloomer, semi-double in form. Rather dwarf, with a delicate peach pink color. Valuable, due to its extreme earliness and beauty of flower. Stock rather scarce at the present time. Very much worth while. **\$6.00**
- Peggy** (Auten 1931) Double, early dwarf. Bright silvery pink. Petals notched and crinkled. No rating as yet. **\$1.25**
- Phoebe Cary** (Brand 1907) 8.8 A very late, pale, old-rose pink, darkening toward the center of bloom. The plant is very tall with strong stems and good, light foliage. Rose type, slightly cupped with large broad petals. Delightfully fragrant. Always opens well. **\$1.00**
- Phyllis Kelway** (Kelway 1908) 9.0 We have always admired this semi-double variety due to its daintiness and artistic makeup. Color is rose pink, paling to white in center. Hollow, cupped form at first showing many stamens, later developing a flat crown which covers the imperfect collar. Faintly fragrant. Medium height. Very floriferous. **\$1.25**
- Pink Charm** (Kelsey 1936) Early, double, soft flesh-pink. Broad outer petals around shorter, twisted and overlapping petals. Fragrant. **\$4.00**
- Pink Lustre** (Kelsey 1936) Semi-double, flat flower of light pink. Early. Flowers much the same formation as Marie Jacquin. **\$2.50**
- Pitti Sin** (Vories 1924) 8.65 A late, medium pink peony of upright habit and strong stems. This peony was named by a tiny tot just learning to talk who was trying to say "pretty thing." It is an attractive variety that you will appreciate. **\$1.50**
- President Coolidge** (Brand 1928) 8.89 Double, late, lavender pink. The bloom is large with large guard petals always opening well. This is another of Mr. Brand's fine originations. Blooms carried well above the foliage, on long, stiff stems. Prominent guard petals stand out from the rest of the flower. A very fine peony. **\$2.50**
- President Wilson** (Thurlow 1918) 9.3 Double. Very late and large. Bright rose-pink, paling with age; a trifle darker in the deep, cupped center. Possesses a rich, spicy fragrance. Medium height, floriferous, strong stems and good foliage. **\$1.50**
- Pride of Essex** (Thurlow 1916) 8.9 Double type, large midseason variety. Incurved guards and crumpled center of light, rose-pink, paling to blush white, showing a golden suffusion from its many stamens. **\$1.50**
- Queen of Hamburg** (H. P. Sass 1937) 8.96 A very full double, bright, gleaming pink. The flower is immense, yet so perfectly formed that it is not rough or ungainly. Stems are tall and strong. A free, dependable bloomer with healthy, heavy, dark green foliage. A recent introduction of much merit. **\$4.50**

- Raoul Dessert** (Dessert 1910) 9.0 A brilliant shell pink of a shade extremely rare in peonies, lacking the mauve and bluish tints so commonly found. Rose scented and fairly free flowering. The color is appealing, but we have found it a little eccentric. Some years it is delightful while in others it does not give as good an account of itself. \$2.00
- Rare Carving** (Kelsey 1935) Loosely formed, medium pink, semi-double. Large yellow stamens. Tall, strong stems. Originally named Spring Beauty but Col. Nicholls had priority to the name. \$2.50
- Reine Hortense** (Calot 1857) 8.7 This variety remains one of the best commercials we grow. It is a lovely, tall midseason rose-pink. Crisp, fluffy petals of translucent texture, notched and silvered at the tips. There is an occasional fleck of crimson in the center of the flower. Sometimes referred to as President Taft. \$1.00
- Rose Shaylor** (Shaylor 1920) 9.1. Pale flesh-pink, tinted with rose-pink, lighter at the edges and shading to creamy yellow at base of petals. Central petals strongly marked at edges with crimson. Flat flower, opening hollow in center, displaying a creamy flesh-pink surrounded by a band of similar richly colored petals. Has mild fragrance. This is one of Mr. Shaylor's best originations. \$1.50
- Serene** (Franklin 1921) 8.6 Late, large, double, type. Guard petals rose-pink outside, lighter inside; center rounded, pale cream pink with a faint rose flush in the center. Crimson markings show on a few of the center petals. Dwarf in habit of growth, but stems are straight and stiff. Broad, curved, glossy foliage. \$1.50
- Silvia Saunders** (Saunders 1921) 8.7 Semi-double type. Rather small but a delightful, extra early, cup-shaped, bright, clear rose-pink, fading lighter toward the center of flower, which is filled with yellow stamens, among which the very bright pink stigmas make a conspicuous pattern. Dwarf habit of growth, good grower and a very abundant bloomer. Odor not particularly pleasant but it is a most delightful and charming subject for flower arrangement. Very dainty and alluring. \$3.00
- Sistie** (Auten 1933) A late, double, high-built pink, fading white. Strong rose fragrance. Not yet rated officially. \$2.00
- Therese** (Dessert 1904) 9.54 A favorite for many years, in fact for 42 years it has enjoyed an enviable popularity as a garden and show flower. The bloom is exceptionally large, composed of extremely long petals of pale, translucent, old rose-pink, paling toward the base and illumined by a golden yellow glow in the depths. Heavy foliage, strong stems and a free, dependable bloomer. \$2.00
- Thomas C. Thurlow** (Thurlow 1919) 9.1 Midseason, large double type bloom of wide, cupped guard petals of light, flesh-pink, paling to cream white. Collar is composed of narrow petals of same color, bearing anthers, mixed with a few yellow petaloids. Medium height, floriferous, with strong stems. Has a pleasing, spicy fragrance. \$1.50
- Tourangelle** (Dessert 1910) 9.4 Regardless of the fact that this peony was originated nearly 40 years ago, it still remains one of the most beautifully colored peonies in the garden. It is a full double, large and late. A pale, cream white with a tan suffusion in the depths, toning to flesh pink in the center. Light, wiry stems. Has the rich delicate coloring of the inside of a sea shell. A very beautiful creation. \$1.50

- Tiny Tim** (Kelsey 1941) Miniature semi-double, light pink. Very interesting. The flower is formed like the old familiar variety Marie Jacquin. Early midseason. Bloom ranges in size from 1½-3". Fine for arrangements. **\$2.50**
- Vesper** (Kelsey 1935) Anemone type. Pink guards. Ivory staminodes, tinted pink. A striking color combination. Large and showy. Very attractive in the garden. **\$5.00**
- Victory Chateau Thierry** (Brand 1925) 9.24 A very lovely double, large, midseason, bright, clear pink, that is pleasingly fragrant. Strong, erect stems, rather dwarf. The blooms are exceptionally large under ordinary cultivation and make an outstanding display in the showroom. The petals are rather loosely formed so that it always opens freely. **\$5.00**
- Vina Mae** (Kelsey 1934) This is a lovely creation of a light shell-pink with lavender cast, fading to almost white. Flat flowers, semi-double, rose-pink. Very decorative. Color holds well. Petals cupped. It has always been admired in our garden. Foliage is very robust and flowers are produced in profusion. Our stock direct from the originator's garden. **\$4.00**
- Walter Brewster** (Brewster 1932) Double, midseason, light pink or blush. Very tall growing variety and a lovely one. The delicate color fades somewhat. Some might class this as a semi-double but as it grows for us it is a full double and our stock came direct from the originator's garden. This peony originated in a very lovely private garden and has not been disseminated. Stock very limited. **\$5.00**
- Walter Faxon** (Richardson 1904) 9.3 Until the recent introduction of Mrs. Livingston Farrand, Walter Faxon was one of our best light pinks. The color is a vivid shell pink of a luminous intensity unique in peonies. Delightfully and pleasingly fragrant. Medium height. Good stems and foliage. Very popular and desirable. **\$1.50**
- Westhill** (Little 1938) 9.15 Double, early, very large, full light pink. Mr. Little has introduced but few peonies but they are all good ones as he was one of our most outstanding judges of the peony. **\$6.00**
- Wilton Lockwood** (Shaylor 1917) 8.8 Double type, very large, midseason variety. The bloom is extremely large and the color a light-rose pink. Outer petals opening cupped, but relaxing with age, showing a long, incurved center, marked with prominent red splashes. Illumined throughout by the bright yellow glow from the concealed stamens. Tall growing; good foliage. A very desirable peony. **\$2.00**
- Willoughby** (Kelsey 1935) Very large, flesh-pink double, showing stamens. Faint red edges on some petals. Good stems. Color changes to white with age. **\$3.00**

DARK PINK PEONIES

- Armistice** (Kelsey 1938) Double, large rose pink. Very tall and strong stems. Rose formation. Late midseason. Very good variety. Fragrant. **\$5.00**
- Ben Cofeld** (Kelsey 1934) Pink double, like Mons. Jules Elie. Very large petals, closely packed and set in edgeways. Almost ball shaped. Heavy stems. Shorter outer petals. **\$2.50**
- Blanche King** (Brand 1922) 8.9 Deep, dark pinks are always admired in the garden planting and Blanche King fills the bill completely in this respect. The flower is very large, symmetrical and true rose type. A glowing, deep pink that holds its color in the field or garden. Very late bloomer and a consistent winner at our National Peony Shows in this color class. **\$5.00**

- Buffalo Girl** (Kelsey 1934) Double. Wine, or very deep pink color, shading to white at tips of petals. Good stiff stems. Huge blooms. **\$4.00**
- Cathie Ann** (Auten 1942) Not yet officially rated. A double, late-midseason variety of deep rose-pink. Flower is held rigidly erect on tall, stiff stems. Ideal for cut flowers. **\$20.00**
- Claire Dubois** (Crousse 1886) 8.7 Bright rose-pink, with considerable blue in its composition; almost a mauve pink. This color pales toward the tips of the petals, whose serrated edges give the flower a crisp appearance. Odor is not pleasant. Very full, rose-type bloom on strong, stiff, stems. Moderately tall. Foliage dark green. A good, standard variety that behaves well in the garden. **\$1.00**
- Clemenceau** (Dessert 1920) 8.5 Full double type. Inner surface of petals a rich, glowing rose-pink. Compact, globular form. Tall growing variety with stiff stems. Late blooming variety. **\$1.50**
- Donald** (Kelsey 1936) A very tall double attaining a height of 54". Rose pink, fragrant. Light green foliage. Stems very wiry carrying medium sized flowers. Broad, incurved outer petals around closely packed row of shorter petals. Faint tinge of yellow deep in petals. Very attractive bloom. **\$5.00**
- Dr. Barnsby** (Dessert 1913) 8.1 Double type, medium late. An evenly colored globular flower of dark, old rose or light purplish crimson. Fairly fragrant. Strong stems and good foliage. **\$1.50**
- Ella Christiansen** (Brand 1925) 9.0 No matter how many peonies you have already planted, you will find this a worthy addition. The color is a pleasing dark pink, not as deep as Blanche King. Petals are long, narrow and heavily serrated on the edges. Flower first opens cup shaped and then assumes a flat posture. A most dependable variety and irresistibly appealing to the eye. Should be more widely known and grown. **\$3.00**
- Ernest Hutchinson** (Kelsey 1935) Rose pink, double. Large, 8" bloom. Row of broad petals open horizontally below a high built ball of closely packed, finely cut petals, twisted and intertwined in a compact ball. Not for sale this season.
- Franklin's Pride** (Franklin 1932) 8.95 A late, deep pink variety that Mr. Franklin considered worthy to bear his name. Very large, full rose type with stiff stems. Vigorous grower with leathery foliage. Fragrant. Some growers consider it an improved Walter Faxon. **\$2.50**
- Exotic** (Kelsey 1936) Semi-double. Rose pink petals shading lighter toward tips. Midseason. Flowers very unusual and attractive. The semi-double flat flowers look oriental. It waves in the breeze on its long, slender stems like an oriental dancer. It is different, and instantly catches the roving eye. Formerly named Queen Esther. **\$4.50**
- Germaine Bigot** (Dessert 1902) 8.5 Double type, large midseason. Color, light rose-pink, loosely formed, stamens which discolor quickly. Develops a crown slowly and irregularly, showing flesh-pink tints and prominent crimson edges. Odor not particularly pleasing. Strong stems, good foliage. **\$1.50**
- J. F. Cooper** (Kelsey 1937) Double. Large. Very deep or rose pink bloom shading lighter toward tips of petals. Early bloomer. Tall, strong stems. **\$3.00**
- Josephine Hope Healy** (Brand 1936) Double, late midseason. Broad rounded petals of clear rose-pink. One of Mr. Brand's recent originations and a good one. Stock limited. **\$5.00**

- Lady Kate** (Vories 1924) 8.85 A very late blooming pink and unquestionably one of the very best late ones. The flowers are graceful, rose type, on tall, straight stems. The color is a sparkling Paul Neyron pink and is much admired by all who see it. \$2.00
- Last Rose** (Sass 1930) 8.93 Late, deep pink, in fact it is one of the latest to bloom in the garden, carrying the blooming season several days beyond normal. Fully double. \$1.50
- Laura Ellen** (Kelsey 1936) Light rose. Informal double. 8" blooms. Rather dwarf grower. Good stems. Early-midseason. Much the color of Judge Berry but a shade darker. More dwarf growing and stronger. Very large flowers. \$5.00
- Lights Out** (Kelsey 1934) Large, rose pink double. The very last to bloom in the garden. Due to its lateness the peony season is considerably lengthened. Its outstanding feature is its extreme lateness. \$3.50
- Loren Franklin** (Franklin 1931) 9.08 A late, deep pink peony of more than ordinary merit. Here is a peony that needs to be better known and we predict that it will be much in demand in the future. Very large, full rose type with stiff stems and foliage to the ground. Received a First Class Certificate of the American Peony Society. Believe us, this is a beautiful dark pink peony. \$4.00
- Martha Bulloch** (Brand 1907) 9.1 Martha has attained the aged of over forty years and still she maintains her girlish freshness and charm. We have seen blooms that actually measured 12 inches in diameter. We pride ourselves on having been endowed with some very keen olfactory nerves and have no hesitancy in pronouncing this variety as possessing a most delightful and pleasing rose fragrance that calls for a repeated sniff. The color is a bright old-rose pink. The plant is tall and the stems never fail to hold the immense and stately blooms erect under all conditions. Not a very rapid propagator and for that reason stock is not too plentiful. One of Mr. Brand's fine contributions to peony lovers and one that has brought him in a substantial remuneration for his efforts. \$3.00
- Maud L. Richardson** (Hollis 1904) 8.5 Double, large to very large and a very late rose-pink with a flesh-pink undertone which is more pronounced at base of petals. Pleasing fragrance. Excellent stems and foliage. \$1.50
- May Corbin** (Kelsey 1934) Very deep pink double. Medium size, tall, wiry stems. Midseason bloomer. High built crown. Large flowers. Fragrant. \$3.00
- Mme. Emile Debatene** (Dessert-Doriat 1927) 8.85 A very fine, deep pink peony blooming in mid-season. Flower very artistically built and attains a large size. Fine, healthy foliage and good growing habit, making it a most desirable acquisition. You will find this in the show room with the very "top notchers" in its class. \$3.00
- Mons. Jules Elie** (Crousse 1888) 9.2 This peony is well known and extensively grown for the commercial market. Has proved a most satisfactory introduction and for nearly 60 years has been a source of real satisfaction to peony growers throughout the land. To the novice, amateur, or professional alike, it always delights and behaves most exemplary. Full double type, very large and very early. Light rose-pink. Broad, smooth guard petals. Center incurved and silvered with light-grayish pink. Very tall and free flowering. \$1.50
- Mrs. F. A. Goodrich** (Brand 1925) 8.94 This variety originally rated 9 and we believe this rating should still stand. Large, double type. Late blooming variety. Dark, deep bright pink, with long, narrow petals of good substance. Stock rather limited and we believe it deserves more recognition. We have only a limited amount of stock to offer this year. \$3.50

- Mrs. John M. Kleitsch** (Brand 1925) 9.0 A tall, stately, deep pink that comes very late in the season. Due to this fact, it is better suited for locations where the June sun does not get too torrid. The petals are long, broad and pointed and of exceptional substance. Full rose type and pleasingly fragrant. It brightens up the garden after most of our favorites have thrown off their decorative and colorful robes for the season. **\$2.50**
- Old Forge** (Kelsey 1936) Rose pink, double. High built crown. Medium sized flowers on long, strong stems. **\$2.00**
- President F. D. Roosevelt** (Franklin 1933) 8.85 A full double, late, tall, deep pink variety that is taking its place among the elite in peonydom. We find this a splendid, sturdy grower, and flowers are borne on strong, stiff stems. Foliage a dark green. A variety you will admire in your garden. **\$5.00**
- Rosada** (Nicholls 1942) Late midseason. Very large and tall, wide petaled, full double of medium rose pink. Honorable Mention Certificate by A.P.S. A very desirable acquisition for any fine peony collection. **\$5.00**
- Rosalie** (Auten 1927) 8.78 Here is a little gem for your garden that can occupy a space where a tall-growing variety would not be satisfactory. As the name implies, it has the appearance of a large rose. Has some stamens, but they are well hidden in the depth of the bloom. Full double, medium-sized bloom. Clear, rose color. **\$2.50**
- Rose Glory** (Otis 1940) Double, large, rose colored flower. A new color departure. Fragrant, early-midseason. Semi-dwarf. Good, strong stems. Stock very scarce and little available. **\$15.00**
- Rose Fluff** (Kelsey 1938) Double. Very large rose-pink. Late, mid-season variety. Wonderful for those who like a strong rose shade of pink. **\$5.00**
- Sarah Bernhardt** (Lemoine 1906) 9.0 A double, late-midseason variety that is much in demand as a florists' variety. The dark rose-pink color, with petals edged a trifle lighter, gives an attractive appearance. Was originated in 1906, but still is a very popular variety, as it carries in storage very well. Also will be found in large collections on the show table competing with more recent originations. **\$1.00**
- Spring Beauty** (Nicholls 1933) 8.43 A very early, huge, rose pink bloom that has much appeal as it opens the season in the large double varieties. We like this one very well and think you will. Much admired by visitors in our garden. **\$2.50**
- Strassburg** (Goos & Koenemann 1911) 8.4 Double, very large, midseason blooming variety. Giant outer petals forming a hollow-centered flower of fine form and great size. Pale old-rose or lavender-pink, illumined by yellow stamens in the center of the flower, and a pale yellow base on most of the petals. Tall, strong stems. An effective flower for shows, also fine for landscape effect. **\$1.00**
- The Nathans** (Kelsey 1937) Large, rose-pink double. Semi-dwarf. Pleasing fragrance. Broad outer petals. Center closely twisted and overlapping. **\$2.50**

RED PEONIES

- Adolphe Rousseau** (Dessert & Mechin 1890) Here is an old, tried and true variety that can be depended upon. Double type, very large, midseason, lustrous red shaded maroon, showing yellow stamens and light red stigmas in center. Stems strong and vigorous. Odor not pleasing as is the case with most reds. Fine for arrangements. Holds up well. **\$1.50**

- Ben Franklin** (Brand 1907) 8.1 Here is a fine peony of rich, dark crimson, double type, very large with a center composed of smaller overlapping petals mixed with many stamens. Faintly fragrant. Strong stems, very tall and free flowering. Flowers held high and erect above foliage. **\$1.50**
- Black Warrior** (Nicholls 1941) Not yet rated. A full double, midseason bloomer, red-black in color. No stamens show. Medium size and height. A most interesting introduction. **\$4.50**
- Chippewa** (Murawska 1941) A double, midseason red with more than ordinary appeal as to color, which is outstanding. A very tall, strong grower, much admired. Stock in demand and very limited in quantity. **10.00**
- Cleopatra** (Auten 1939) A very late double peony of brilliant dark red. Fragrant. This name has been used by others so be sure to get the Auten variety. This particular variety is well worth while. Very limited amount of stock to offer. **\$3.00**
- Fannie Lee** (Vories 1924) 8.48 Midseason red. Rather tall, strong growing variety. Stock limited. Fortunately we have a fair stock to offer. **\$4.00**
- Felix Crousse** (Crousse 1881) 8.4 A dependable, attractive red that has given satisfaction for many years. A variety that will stand the test of time for as many years as Felix Crousse has, surely must be good. A great commercial variety and holds in storage with the best of them. Color is brilliant crimson, of even tone and silky luster. Late midseason bloomer and for that reason it has added value. Foliage good, but the stems are not as strong as we would like. **\$1.00**
- Fireplace** (Kelsey 1936) Double, very dark red. Comparable or superior to Mons. Martin Cahuzac. Medium sized blooms. Slightly lighter at tips of petals. Flat formation. A better performer than Mons. Martin Cahuzac, very unusual. (Originator's description). **\$1.50**
- Ida Mellinger** (Kelsey 1934) Sdlg. 156 Midseason, very dark red. Fully double. Petal arrangement like Philippe Rivoire. Rose formation. Pleasant odor. Shows some purple in the red. Holds color well. Strong stems. **\$3.00**
- Inspecteur Lavergne** (Doriat 1924) 8.67 Here is a flower with much appeal. A double type, early and globular crimson flower with frilled petals in the center. Stems are long and straight. A very pleasing addition to our list of reds. Makes a fine show flower. **\$2.00**
- Irwin Altman** (Kelsey 1940) A very fine, clear glowing light red unlike any other red. Good form and pleasing color, that will be much in demand when better known. Mr. Kelsey was justly proud of this origination. All stock direct from the originator's garden. Full double with petals symmetrically arranged and very fragrant. Color is very distinctive and most desirable. **\$10.00**
- Kansas** (Bigger 1941) A double, midseason, very distinctive rosy-red. Excellent plant growth and strong stems. A very showy flower. This peony is bound to go places when better known. **\$10.00**
- Karl Rosenfield** (Rosenfield 1908) 8.8 A very large, bright crimson with a slight touch of blue in it. Outer petals, large and waved; center petals, incurved and notched. Lacks fragrance. Tall, free flowering, with good, stiff stems. Very fine for commercial cutting if not cut too tight in bud. **\$1.00**

Longfellow (Brand 1907) 9.0 Mr. Brand has brought out many fine reds, but none finer than Longfellow. A double, midseason, bright crimson, intensified by golden yellow stamens near center. Like many reds, it is lacking in fragrance. Does not fade and is most satisfactory for cutting as well as garden decoration. Medium height, good foliage and a a free bloomer. **\$2.00**



Lora Dexheimer (Brand 1913) 8.4 Double, type, large midseason variety. Bright crimson showing a light midrib on outer petals. Center incurved, concealing a few stamens. Medium height, stiff stems, good foliage. This is another of the good reds Mr. Brand has originated. Very bright color or red. **\$1.50**

Philippe Rivoire

Mary Brand (Brand 1907) 8.7 A large midseason, rose type bloom of dark, clear crimson showing a very brilliant sheen with a very few yellow stamens buried in the collar. This peony originally sold for \$100.00 each. **\$2.00**

Matilda Lewis (Saunders 1921) 9.0 A very dark maroon red that is well formed and fully double. Stems stiff and of medium height, holding the large blooms firmly erect. This variety is pleasingly fragrant and a worthy addition to our list of red varieties. Midseason bloomer. Foliage, dark green. Very attractive in any collection. **\$2.50**

Mons. Martin Cahuzac (Dessert 1899) 8.8 A maroon and gold creation that excites admiration when well grown. Considerable unhealthy stock of this variety has been disseminated. Can be grown to a very large size on established plants. Sometimes appears semi-double on newly planted stock. The entire flower has a silky, black luster that adds to its beauty. Free flowering, erect, stiff stems. **\$1.50**

Mrs. Bryce Fontaine (Brand 1936) 9.05 Double, late-midseason. Rich dark crimson. Darker than Longfellow but lighter than Mons. Martin Cuhazac. One of the best. **\$6.00**

Noel (Kelsey 1935) Double midseason. Very large 7 inch blooms perfectly finished on extra tall stems. This is a red double as good as many and better than most. Size as large or larger than any red double. Color clear, but intense. Stock very scarce, and only a limited amount to offer this season. **\$6.00**

Onondaga (Little 1935) 8.92 A midseason peony that is different. There is a rich metallic sheen in the coloring that is unique and when the writer first saw it some years ago I thought it was the nearest approach to purple I had ever seen. A tall growing variety with stiff stems and good foliage. **\$5.00**

Philippe Rivoire (Riviere 1911) 9.2 Double type, early, midseason. A very dark crimson, with a blackish sheen. Flowers are of medium size, but have seen them extremely large under special handling. Has the pronounced fragrance of

a Gruss an Teplitz rose and a variety we can recommend most heartily. It is to be found in nearly all large peony plantings as well as small collections. So many reds lack fragrance, but this variety compensates for a number that are deficient in this respect. Medium height, wiry stems that hold the fine bloom erect. The flower is beautifully formed and holds its color in the brightest sun. **\$3.25**

Priam (Sass 1930) 8.9 Double, midseason variety. A well formed, deep, rich, dark red. It has proved a very popular variety and deservedly so. There is need for good reds and this is one of them. Stem stiff and rigid. Rather tall grower. **\$4.50**

Richard Carvel (Brand 1913) 8.8 This peony, to our mind, deserves a little higher rating, as it is a very desirable introduction. A full, loose, double, very early, fragrant red. A good cut flower variety and holds its color well. The demand has greatly increased during the past few years, as its real worth is more generally recognized. **\$1.50**

Rubio (Nicholls 1941) A deep, clear red that is a good addition to our group of reds. Another new one that needs more checking for detailed information. **\$2.00**

Ruth Clay (Kelsey 1935) What shall we say about this fine red peony? When we visited Mr. Kelsey's gardens, we were greatly impressed with it. Double, early, midseason. A rich living red that is different. Watch for this variety at the shows. It is a truly outstanding red that should be in every choice collection of peonies. No matter how many red peonies you have you will find Ruth Clay different. We will have a good stock of this variety to offer in 1948. Watch for this one as it is really fine. **\$15.00**

Shawnee Chief (Bigger 1940) A new one not yet officially rated. Double, midseason, dark, brilliant red. This is a recent introduction and a very worthy addition to our list of reds now in commerce. **\$5.00**

Thor (Sass 1937) 8.95 A double midseason variety. Here is a good red of distinctive color, and when better known will be more generally grown. Stock limited. **\$3.50**

Valor (Kelsey 1939) Very fine red double. Mr. Kelsey considered this one of the best reds in his planting. Midseason. Good stems and foliage. **\$3.00**

William F. Turner (Shaylor 1916) 8.4 Double, early, large midseason with very dark crimson petals with a blackish sheen. The manual states that this is not a fragrant variety. The stock we have has a most pleasing and agreeable fragrance. **\$1.50**

WHITE SINGLE PEONIES

Albiflora-The Bride (Dessert 1902) Pure white single. Large, saucer shaped blooms with long petals rounded at the ends. Medium height. Very prolific. Quite closely resembles La Fiancee. **\$1.50**

Krinkled White (Brand 1928) 9.0 A very lovely creation that gives a great deal of satisfaction in the garden, as it is unique in its makeup. Very aptly described by the well chosen name. First noticeable in the bud, which resembles a pale pink tulip just ready to make its appearance. Bud is comparatively small and beautiful in effect. As it opens, it expands into a large flower with great, broad, pure white petals like crinkled crepe paper. Stems, tall and straight, slender and strong. Foliage, clean, light green. **\$3.50**

Le Jour (Shaylor 1915) 8.6 What a lovely single this one is. Early, very large, with two rows of very long, wide overlapping petals. Center a broad ring of golden yellow stamens a group of reddish carpels tipped darker and having a pink line at base. Tall, free bloomer. Stands erect with good foliage. Keeps exceptionally well when cut. Gives a most charming landscape effect. **\$1.50**

LIGHT PINK SINGLE PEONIES

Blushing Bride (Gumm 1930) Single, early, light blush. This variety is little known and there are not many in commerce. A very daintily colored bloom that is pleasing to the eye. **\$2.00**

Dainty (Nicholls 1941) Early single. Light silvery pink. Very large flower. Attractive and desirable. This is one of the new ones that we predict will go places when better known. **\$2.50**

Early Morn (Kelsey 1936) Single, rose pink. Very early bloomer. A good pink that should be well received. **\$2.00**

Helen (Thurlow 1922) 9.0 Single type, early. Double row of broad, round, shell-pink petals, with a mass of golden stamens in center. Foliage, dark green. This is a very dainty variety, and is grand for landscape effect. Flowers also excellent for floral arrangements. **\$2.00**

Josette (Brethour 1937) Single, late, pale-pink. Splendid form and color. The late Dr. Brethour was a fine peony judge and brought out some very fine additions to our long list of peony varieties. Stock very limited. **\$5.00**

La Fraicheur (Dessert 1905) 8.1 Large, light, rose-pink, shading a little lighter at the base, surrounded by bright yellow stamens. Carpels, pale waxy green with lighter tips. Faintly fragrant. Free flowering. Clear, delicate and pure color. **\$1.00**

Pink Bonnet (Kelsey 1935) Seedling K-5 Single, clear, light pink. One of the first to bloom of the sinensis varieties. Petals are mostly cupped and shaped like a tulip. **\$3.50**

Rosy Dawn (Barr) 8.5 Single type, large and early midseason. Opens a soft pink, changing to pure white. Medium height, free flowering, strong stems. Dark green foliage. A very attractive flower. **\$1.50**

Thelma (Kelsey 1935) Single early, light pink. 8" to 9" bloom. Good substance of petals produce a lasting flower. Fine staminodes with green carpels, white tipped. An intense showy bloom that makes a big splash in the garden. **\$4.50**

Wild Rose (Kelway) 8.5 This peony is well named, as it does resemble a wild rose. Single type, large, midseason variety. The long, smooth petals are powdered thickly with tiny rose-pink dots, giving a pale-pink effect. Small cluster of yellow stamens in center, carpels crimson. Slightly fragrant. Good, strong stems and very free bloomer. Most interesting on account of markings on petals. **\$2.00**

DARK PINK SINGLE PEONIES

Harriet Olney (Brand 1920) 8.7 An extremely early variety. One of the first Chinensis varieties to give color in the field. Opens a deep rose, but gradually changes to a soft rose-pink. Stems tall and erect. If you want a fine pink single, you will find your wishes gratified in this variety. Very fine for landscape effect, and gives a dash of color very early in the garden. **\$1.25**

- Imperial Red** (Hans P. Sass 1932) 9.05 A midseason variety first called Imperial Pink. The color is rosy red or very deep pink. Produces an immense flower borne on very heavy stems. A pale pink, semi-double has been found masquerading under this name. **\$1.50**
- Mischief** (Auten 1925) Not yet rated. A most satisfactory dark pink. Good size and color which holds well in the sun. Stems stiff and strong. A good landscape variety. **\$2.00**
- Nellie** (Kelway 1915) 8.6 Very bright, rose-pink single. Midseason. Changes to almost white with age and exposure to sun. Small tuft of yellow stamens in center. Foliage narrow and waxy. Very floriferous. **\$1.00**
- Prairie Rose** (Brand 1936) Single, early, very large, deep rose pink. Color similar to that of *Edulis Superba*, which is most pleasing. **\$4.50**
- Pride of Langport** (Kelway 1909) 8.9 Single type, very large, midseason variety. Wide spreading, cupped petals of pale, rose-pink fading toward the base of bloom, surrounding a cluster of very bright golden yellow stamens and pale green carpels. Tall, thin wiry stems that hold the flowers erect. Abundant foliage. A very popular pink. **\$1.75**
- Seneca Chief** (Kelsey 1942) Wine color with yellow center. Edges of petals crimped and cupped a lighter shade of wine. Medium height. Early. Heavy dark green foliage. The crimping and cupping of the petals produce a striking effect. Stock Limited. This is an unusual color and very attractive. **\$7.50**

RED SINGLE PEONIES

- Arcturus** (Auten 1933) 9.3 A single, velvety, dark red variety of recent introduction. This is one of the very best singles of this color we have at this time. **\$4.00**
- Cornie Moore** (Kelsey 1934) A deep, single red (garnet), with a glossy sheen. Flowers large and showy. Plant strong, a vigorous grower with red stems. Foliage dark green. Here is a fine, outstanding single that will be freely grown when better known. There is room for good singles and this is one of them. We are indeed fortunate in being able to offer stock as we are co-purchasers of the originator's entire stock. **\$5.00**
- Gopher Beauty** (Franklin 1933) Single, early, very bright red. A very attractive color that is most pleasing. Mr. Franklin devoted most of his attention to doubles, but did bring out a few outstanding singles to his credit. This is one of them. **\$2.50**
- Inca** (Nicholls 1941) Bright scarlet rose single. We have a good stock of this fine single peony and we feel it is a worth while addition to your planting of single peonies. Rarely seen in peony plantings or at peony shows due to the scarcity of stock. Col. Nicholls has a very fine single in this variety, but he has never been as much impressed with the singles as he has been with the full doubles and for that reason has not offered it for sale. **\$2.50**
- Jimmie Franklin** (Franklin 1928) 8.6 An early red single that is fairly tall. An imposing flower that is huge in size. Color an even shade of dark red. Saw this in the originators garden when first introduced and was much impressed with it. **\$3.00**
- Kickapoo** (Auten 1931) 9.17 Single, large, deep red. A late duplicate *Arcturus* by the same originator. This is really a good single and should prove a welcome addition to your planting of singles. Stock limited. **\$2.50**

- La Salle** (Auten 1931) 9.08 Another Auten origination of merit. Color light red. A very fine landscape variety. Well worth a place in any garden. Stock rather limited. **\$2.50**
- L'Etincelante** (Dessert 1905) 8.4 A very large midseason single. Cupped flowers of very bright pink, each petal having a lighter, almost a silver border. Stamens, bright, golden yellow. Have seen this variety placed in the red class at some of our Peony Shows and it could not be thrown out for incorrect color placement: tall, stiff stems, with excellent foliage. Flowers are of exceptional size and produce a splendid landscape effect. **\$1.00**
- Mafeking** (Kelway) 8.2 Single, very large midseason red. Smooth cupped guards of dark ruby-red; center composed of many yellow stamens with ruddy filaments. Carpels are nearly white, with a white base at tips. Mintlike fragrance. Dark green foliage. Free blooming and tall. **\$1.00**
- Man O' War** (Brand 1936) 9.33 Single, early bloomer. Very large, bright red. Strong stems. Very showy. Makes a splendid showing in the garden planting. Feathers slightly some seasons. **\$4.50**
- Othello** (Dessert 1908) A single, fine dark red peony. Little known or grown in American Gardens. Have a fair stock to offer at this time to our customers. **\$3.00**
- Vera** (Gumm 1923) 8.8 Single type, large, early midseason. Undulated and cupped guards of very dark maroon-crimson, with a silky sheen. Small, compact center of clear, golden stamens, with yellowish carpels tipped bright red. Fair fragrance. Medium tall and erect grower. A very good landscape variety and the color holds well in the sun. **\$1.50**

JAPANESE PEONIES

These can easily be distinguished from the single varieties, as they bear no pollen. They also have a double row of petals instead of a single one to be found in the single varieties.

This type of flower holds well in the garden and makes an excellent cutting variety for the house, lasting as long as the double type bloom.

The wide variety of color and variation of colors, combined with unusual formation and arrangement of petals and petaloids, make the Japanese type of peony most artistic and pleasing to the eye. Perfectly hardy in every respect and will sometimes withstand late freezes better than the double type without suffering damage to the bloom.

We have added a number of comparatively new Japanese varieties in this issue of our catalog. Many of them are most outstanding and all of them are worth while. The late Mr. Kelsey has originated some fine ones, a few of which we are listing, and Col. Nicholls has a considerable number which we are also including. We were fortunate to see them in bloom in these two gardens before we purchased the stock and can vouch for their real beauty and distinctiveness.

If you do not already have Japanese peonies in your planting, we urge you by all means to add a few this year, and we are confident you will want to add more of them to your planting the following years.

WHITE JAPANESE PEONIES

- Harvest Moon** (Kelsey 1936) A midseason Japanese variety that is somewhat similar to Shaylor's Sunburst. Cupped white guards and yellow staminodes. This is a very choice variety and blooms at the same time as Isani Gidui which it closely resembles, with the exception that the cluster of staminodes of Harvest Moon are more compact. Our stock direct from the originator. A great favorite and rightly so. **\$4.00**

- Isani-Gidui** (Origin unknown) 9.3 The high rating of this beautiful white Jap speaks well for its popularity. Very large, midseason variety, with two rows of broad, rounded, smooth guard petals of pure white. Center is a rounded mass of thin staminodes of rich buff-yellow. Carpels green, tipped pale yellow. Moderately tall. Foliage intensely crinkled. Splendid bloomer; vigorous grower. One you will want in your garden without fail. This variety and Toro-no-maki are twin whites that are outstanding and really worthwhile. You can't go wrong with either. \$2.00
- Leto** (Dr. J. H. Neeley 1930) 8.84 Midseason, Japanese variety. White guards with a large center of yellow staminodes fading white. A fine Jap, almost anemone type. This has been sent out under other names. True stock scarce. Stock very limited. \$4.00
- Polar Star** (Sass 1932) 8.87 Midseason Japanese type. Tall, strong stemmed, white guards with pink flush. Yellow staminodes and carpels tipped pink. A very imposing and lovely flower. \$5.00
- Shaylor's Sunburst** (Shaylor 1931) 9.1 Formerly known as seedling No. 101. Japanese type, midseason bloom. Color, white, with a blush cast at first. Yellow staminodes and yellow tipped carpels. Most artistic and delightfully interesting and fascinating. One of the best. \$4.50
- Snow Wheel** (Origin unknown) 8.3 Japanese type of bloom, medium sized, midseason. Regular cupped guard petals of pure white. Slightly fluted at the base. Small, yellow center. Staminodes shaded golden buff. Carpels a pale yellow-green. Flower are handsome and make fine arrangement material. \$2.00
- Takaradama** (Origin unknown) 8.7 Here is a grand white Japanese variety for your garden. A fine growing, large, broad petaled white with a lemon-yellow center. A good grower and you will find it a most worthy addition to your planting. \$1.25
- Toro-no-maki** (Origin unknown) 9.0 A very lovely, white Japanese variety with a prominent yellow center. Very similar to Isani-Gidui, but we have always considered it a stronger grower. Petals have great substance and are of heavy texture. Strong grower with stiff stems and a most worthy addition to any peony planting. \$2.50
- Yeso** (Origin unknown) 7.7 A very interesting and attractive white, with tints of yellow in its makeup. Strong, upright grower that adds greatly in producing a charming landscape effect. Flowers excellent for floral work. \$1.50

LIGHT PINK JAPANESE PEONIES

- Alma** (Shaylor 1916) 8.5 A midseason Jap type of medium size. Color is a light pink, darker on the edges and in the middle petals, paling to white at base. Center is formed of incurved, narrow, canary-yellow petaloids and greenish-yellow carpels. Strong stems of medium height, with good foliage. Sometimes feathers in center. \$1.50
- Apple Blossom** (Origin unknown) 7.7 This rating was given in 1925, and we feel that it is not fair to the variety, as in our estimation it deserves a somewhat higher rating. Also known under the Japanese name Rei-kai-zan. Very aptly named, for it is a true apple blossom pink. Very dainty and good to look at. Plant has good growing habits and is medium in height. Good, free bloomer. \$1.50
- Aureate** (Kelsey 1936) Japanese type. A grand flower with pale pink guards. Staminodes rich butter yellow. Green carpels, red tipped. One of the clearest and best yellow centered peonies in the garden. 6" blooms on semi-dwarf stems. The yellow does not fade in the sun. \$3.00

- China Maid** (Murawska 1941) A midseason, medium pink with a great deal of appeal. Stock still scarce as the variety is not well known. We have seen it in the originator's garden and like it very much. \$4.00
- Elma** (Kelsey 1936) Japanese type. Pale pink changing to white. Guards very shapely, cupped and crimped. Staminodes long and yellow. Seed pods green, flecked pink at the tips. The striking characteristic of this Japanese variety is the cupped shaped guard petals which retain their shape until the bloom fades and the petals fall. \$2.50
- Gold Star** (Kelsey 1938) Midseason. Japanese type. Pale pink guard petals with yellow staminodes. We have a fair stock to offer this season direct from the originator's gardens. \$5.00
- Goldfinch** (Kelsey 1936) Japanese type. Pale pink guards with pale yellow center. One of the yellowest centers to be found in the garden. Feathers slightly. Flowers large. Shown on page 17 Bulletin No. 91 as a double, which is incorrect. \$5.00
- Kate Barry** (Nicholls 1938) A late, midseason soft mauve pink of a most pleasing shade, with orange staminodes. Grows quite tall and the flowers are held erect on good stems. We have a good stock of this variety direct from the originator and hope to see many gardens graced with its presence. \$4.50
- Kathalo** (Kelsey 1934) Not yet rated. The orchid of peonies. Japanese type. An exotic blending of shades of pink and yellow, rather difficult to adequately describe. A vigorous grower. Very tall. Stock still rather limited. One to put on your want list. \$3.50
- Kukeni-Jishi** (Origin unknown) 9.09 Japanese type, large, early midseason. The delicate flesh-pink guard petals are large, smooth and evenly rounded; of unusual substance, possessing a satin sheen. Pale rose shading on outside of petals. The center is a full tuft of yellow staminodes with narrow tips richly edged with deeper yellow. Very strong, tall grower. Foliage is heavily ruffled. \$1.75
- La Pinja** (Kelsey 1939) Large pink Jap. Staminodes yellow tipped. Midseason. Interesting. \$5.00
- Neon** (Nicholls 1941) A midseason variety with large, wide rose-pink guards and staminodes tipped and edged gold. Very bright and interesting. \$3.00
- Oliver Twist** (Kelsey 1942) Japanese type. Pink guards. Central cluster of fine, light pink. Staminodes are curiously curved and twisted like a curly headed boy. Very interesting formation. No other Jap like it. Stock very limited. \$5.00
- Rose Valley** (Scott 1925) Shell pink and lemon yellow First Class Certificate also the American Home Achievement Medal. A very lovely creation that is tops. Stock limited. \$10.00
- Salute** (Kelsey 1936) Japanese type. Very large, pink guard petals with light yellow staminodes to a deeper yellow at base. Midseason bloomer. \$4.50
- Solo Flight** (Saunders 1935) 9.07 A midseason Japanese type. Very large, flesh pink guards with center of pale yellow. This is a very wonderful variety and a fitting companion of the many fine originations Prof. Saunders has produced. \$6.00
- Sunmist** (Nicholls 1942) Late midseason, very large blush guards with deep yellow staminodes. Tall and extra good. \$4.00

Tomate-Boku (Origin unknown) 9.4 Doubtless originated in Japan, where records are often indefinite and confused. As the rating indicates, this is a most desirable peony that has held its price for many years. It is an extremely slow grower and not a profitable one for the nurseryman due to this fact, but when once established, the blooms produced are immense. Enormous cupped petals of old rose-pink. Center composed of very long, threadlike staminodes, yellow at the base, with rose-pink, flat, crinkled tips, tinted buff at the edges. Downy pale-green carpels, with vivid pink line at base and striking rose-red tips. Slight fragrance, if any Japanese type bloom can be called fragrant. Think "odor" would better describe this quality. **\$8.00**

Westerner (Bigger 1942) Here is a new and grand origination not yet officially rated. To date, only a few plants disseminated. Stock scarce and exceedingly limited. Japanese type, midseason. The guard petals are very large of a beautiful shade of light pink. The center is filled with yellow staminodes that are extremely firm and erect. The combination of yellow and pink is most pleasing. The real charm of this variety lies in the cup-shaped form of the flower and the sturdy, recurved petals so gracefully poised and held so rigidly erect. A most charming introduction of exceptional merit and appeal. **\$10.00**

Yellow King (Unknown) 9.06 Early, large, pale pink guards, vivid yellow staminodes. This is a very beautiful flower that came from Mrs. Harding's garden but is not her origination and she did not know its origin. A very good Jap. variety. Stock limited. **\$4.00**

DARK PINK JAPANESE PEONIES

Akashigata (Origin unknown) 8.74 A very deep rose. Japanese type bloom. A good grower, with strong, stiff stems. Flower large and attractive. Filamental petals in center edged with gold giving it a very novel effect. **\$1.50**

Ama-no-sode (Japan) 9.2 Here is a Japanese type of peony much admired and is popular with peony fanciers. Extremely large, having two rows of long, wide-spread petals of rose-pink, forming a saucer-like cup about an immense center of long, yellow staminodes, with flattened, crinkled tops stained with rose. Carpels green, with yellowish tips. Very desirable and a worth-while variety. **\$1.75**

Cathedral (Origin unknown) 8.1 Large midseason Jap. Vivid, dark rose guard petals with narrow, lighter edges. Compact center of long, pale-pink petaloids with pointed tips and yellow base. A very free bloomer. Also listed as Hana-no-soto in some catalogs. Slightly fragrant. **\$1.50**

Departing Sun (Origin unknown) 8.5 Japanese type, very large, midseason. Dark rose-pink or light crimson touched with lilac at the tips and edges, lighter at the base of petals. Compact center of crowded petaloids, dark red on one side and lighter on the other, curling and twisting so that both colors intermingle, producing a most pleasing effect. **\$3.00**

Glowing Embers (Kelsey 1936) Japanese type. Early, midseason. Rose color guards, lighter on edges. Self staminodes with a tiny spark of white on the tips. All one color except the tips of white. Guards crimped and cupped. **\$5.00**

Gold Mine (Hollis 1907) 8.2 Medium size, midseason, Japanese type. Dark rose-pink of irregular cupped form. Center of narrow, whitish petaloids stained light pink and tipped with yellow. Carpels ruddy green, with pink tips. This variety holds unusually well when cut. Very free bloomer. **\$1.25**

- Jap Giant** (Franklin 1932) 9.0 An exceptionally large, deep rose pink Japanese type flower that grows very tall and is aptly named, for it is really a giant in size, both in flower and plant. Not widely distributed as yet. \$3.50
- Kagawa** (Kelsey 1935) Japanese type. Dark rose-pink. Guard petals pink, surrounding a ring of yellow staminodes, edged rose, which are also intermingled, and twisted with overlapping larger petals of lighter pink. Early. Medium size. \$3.00
- Kobe** (Kelsey 1936) Japanese type. Rose-pink guards. Straw or buff colored incurved staminodes, backed with rose. Center ball shaped. Early. Interestingly different. \$3.00
- Largo** (Vories 1929) 8.98 A lovely, soft medium pink Japanese type, with a center of prominent yellow staminodes. While introduced in 1929, it is not as well known as it should be for it is a splendid introduction worthy of a place in any fine planting of peonies. Has much class and the substance of the petals is exceptionally firm. \$8.00
- Mme. Butterfly** (Franklin 1932) 8.88 A Japanese type, midseason bloomer. Rose-pink of a distinctive shade. This is a very neat peony and one we think you will admire. \$2.50
- Nippon Gold** (Auten 1929) 9.02 Late Japanese variety. Deep pink guards. Intensely yellow center. One of Mr. Auten's good varieties that is a fine addition to existing varieties in this type of bloom. \$2.50
- Noonday** (Kelway) 8.57 A deep, bright pink, Japanese type, with a bright yellow center. Medium height and a good grower. This makes a fitting companion to several other good pinks of this type. \$1.25
- Pride of Blasdell** (Kelsey 1934) Japanese type. Dark rose-pink guard petals. Yellow tipped pink staminodes. Green seed pods, rose tipped. Midseason. Named by Mrs. H. A. Blasdell. A variety with increasing appeal from year to year. \$3.50
- Tatsugashira** (Dragon's Head) Origin unknown. A very dark pink, with a bright golden center. This is described as red in the peony manual, and like L'Etincelante in the singles, might be classed in the light reds. \$1.25
- Tokio** (Japanese origin) 8.9 Large midseason. The waving guard petals are cupped and of a dull, rose-pink color. Center composed of large, loose staminodes, narrow at the base, with wide tips tinted pale yellow and stained pink on the upper half, with buff edges. Carpels are green, white at the base, with pale pink tips. A very good, strong grower and closely resembles Tomato-Boku in color, but a much faster grower than that variety. \$1.75

RED JAPANESE PEONIES

- Akbar** (Nicholls 1941) A midseason rose-red Jap., with bright golden staminodes. Tall and stately grower and a most attractive variety. When Col. Nicholls' Jap. varieties are better known, they will be in great demand. They are surely outstanding. \$2.50
- Aztec** (Nicholls 1941) Midseason, large, bright scarlet-rose. Staminodes rose with orange-rose, tipped bright gold. This is a most attractive Jap. and will prove a most worthy addition to any collection. We are fortunate to have the originator's stock direct from his gardens. Watch for this one at our peony shows. \$2.50

- Battle Flag** (Nicholls 1941) A very deep, glowing red Jap. Staminodes same color with golden reverse. Very unusual and attractive. Not yet rated but will rank with the best. We have fine stock from the originators garden. **\$3.00**
- Charm** (Franklin 1931) 9.22 This peony was very aptly named by Mr. Franklin, for it does possess charm in a high degree. A very dark-red Jap. Good, upright grower. Vigorous and late. A lustrous, satiny sheen on the petals gives it a very classy effect. One of the best of its color. We think it slightly better than Fuyajo, which it somewhat resembles in color and formation of flower. **\$3.00**
- Fuyajo** (Origin unknown) 9.2 Dark purplish crimson. Here is a variety that has attracted great popularity. Center a cluster of old-rose petaloids heavily tipped with pale buff or cream. Tall, strong stems. Foliage ruffled and tipped with bronze. **\$1.50**
- Instituteur Doriat** (Doriat 1925) 8.85 We consider this one of the very good Japanese types of peonies. It is most interesting and worth-while. Color a fine red, and each petal tip is tinted white, making a very novel effect as well as pleasing combination of color. **\$1.50**
- Joseph Plagne** (Doriat & Son & Debatene 1928) A Japanese type with carmine red petals and gold-yellow staminodes. Quite attractive and rarely seen. A French origination not well known in the U. S., and seldom seen at our shows. Stock limited. **\$2.50**
- King of England** (Kelway 1902) 8.6 Japanese type, very large, early midseason variety. Guards symmetrically cupped, of a dark red shade between crimson and maroon with a dull gloss; center of incurved, buff staminodes streaked with dark rose-pink. There seems to be more than one variety sent out under this same name. **\$1.50**
- Mikado** (Japan 1893) 8.6 Japanese type. Medium size, midseason. Waved cupped petals of dark, full crimson. Center broad and flat, composed of thick staminodes stained dark rose red, edged throughout their length and tipped with pale, buff yellow. This is a very attractive variety and well known for its beauty. **\$1.50**
- Mrs. Wilder Bancroft** (Nicholls 1935) 9.08 Very brilliant dark red with red staminodes tipped with yellow. Early bloomer. One of the best red Japs we have. Have a fine stock to offer from the originator's garden. A dandy and don't forget it. **\$3.00**
- Onahama** (Gumm 1926) 8.87 The rating does not do this peony the justice it rightly deserves. Very tall and large cerise red guards. Staminodes tipped yellow. This is a most attractive variety. Stock scarce and few to offer. **\$3.00**
- Red Star** (Nicholls 1941) Tall, deep brilliant red with gold tipped staminodes of the same color. Carpels deep vermillion. Not yet rated but will rank among the good ones. **\$3.00**
- Some Ganoko** (Origin unknown) 9.0 Japanese type, large midseason. Color a dark, clear crimson, with a broad, flat center of many crinkled, light buff staminodes, tinted with rose-red markings. Carpels pale-yellow. Fairly strong growth, with a spreading, sprawling habit. Height about two feet. Foliage dark green, broad and ruffled. **\$1.50**
- Soshi** (Millet) 8.88 Here is a variety that we can unhesitatingly recommend to anyone wanting a fine, red Japanese type of flower. Has a bright golden center of golden petaloids that greatly enhances its beauty. Will not fade in the sun and is held stiff and erect on strong stems. **\$2.00**

Torpilleur (Dessert 1913) 8.0 Deep rose red or purplish carmine describes the color of this Japanese type flower. Center of golden tipped staminodes, flecked white. This is one of the most interesting Jap varieties in our planting of many fine ones. Makes a most delightful bouquet when used alone or placed with white Japanese or single peonies. Possesses a haunting beauty that is much admired. Give it a trial and we think you will agree with us. **\$1.50**

HYBRID AND SPECIE PEONIES

Here you will find something that peony lovers have longed for these many years, and that is a variety that would considerably extend the period of bloom.

The foliage is distinct and interesting and the bloom will thrill you with delight. The work with hybridizing these early peonies has been in progress for some years, but it has been only during the past few years that remarkable progress has been achieved along this line. Try some and be convinced of their worth.

You will be able to extend the blooming season in your garden from ten days to two weeks or more. The colors are not entirely duplicated in the Chinensis peonies and you will find some unusual and really beautiful creations in this hybrid class.

Amelia (Kelsey 1938) Hybrid. Deep, rich red. 3" clusters of bright yellow stamens surrounded by cream colored carpels, 5½" bloom. Grows to a height of 36" or more. Striking and beautiful. Strong stems. Light green foliage. Blooming date, late May. This is the only hybrid of Mr. Kelsey's origination. **\$5.00**

Golden Glow (Glasscock 1935) 9.15 A hybrid peony of rare charm and distinction that is outstanding in any collection of peonies. Stock very scarce. Comes into bloom extremely early. Blooms are cup-shaped, brilliant orange-scarlet red, enclosing a mass of pure golden stamens. Tall growing, with extremely heavy and sturdy stems. Foliage rather coarse, but of a beautiful, colorful green that is attractive. A truly grand origination. A real gem and one of the first to bloom in the garden. **\$15.00**

Macrophylla (1897) A white-flowered species from the Caucasus region. Flowers in the bud are often greenish or yellowish, but the expanded flower is white. The leaflets, which are entire, are much larger than any other species. Very early blooming. **\$4.00**

Mahogany (Glasscock 1937) 9. Very early, single, hybrid peony that forms a deep, mahogany-red cup. Cupped petals are extremely long and of good substance. Center has bright yellow stamens that brighten up the entire flower with a lovely glow. This is a beautiful companion to Golden Glow, another of Mr. Glasscock's originations. **\$10.00**

Marta (Saunders 1938) Double hybrid. Very tall, brilliant, lustrous, deepest mahogany red with touches of white on some petals. Often much like a Japanese type in its composition. A very interesting and desirable addition. Early bloomer. **\$5.00**

P. officinalis rubra 8.6 This species peony has been cultivated in European gardens for centuries. Commonly known as grandmother's "Piney." It is a brilliant double crimson and the foliage is entirely distinct from the sinensis group. Stems strong, each bearing but a single, huge bloom. Needs no disbudding. Comes very early into bloom in the garden. Often used as a cut flower for Memorial day when it is invariably in bloom. The color is an intense red or crimson. **\$1.50**

Rose Marie (Auten-Glasscock 1936) 9.45 Here is a hybrid that will surprise you with its beauty. Both Mr. Glasscock and Mr. Auten are well known hybridizers and they have joined their talents in this production, to give us a deep, rich red of surpassing loveliness. Awarded a First Class Certificate of the A.P.S. for outstanding merit. Stock extremely scarce and we are limited as to the amount we can supply. Its high rating shows its real value. **\$5.00**

PEONY COLLECTIONS

A CONNOISSEURS COLLECTION

For those desirous of adding some of the finest peonies to their collection we can heartily recommend the following:

A. B. C. Nicholls — A grand double white with a tint of pink.	\$ 4.75
Nancy Nicholls — Lovely white with pink suffusion in center.	8.00
Blush — Delicate flesh pink. Attractive and appealing.	5.00
Marilla Beauty — Large blush-white of bewitching loveliness.	15.00
Mrs. Livingston Farrand — A sensational new pink beauty	15.00
Black Warrior — Very dark red.	4.50

Value \$52.25

All Six Plants for \$47.00

The above varieties are all double, high rated peonies that will add distinction and class to any collection.

COLLECTION OF STANDARD VARIETIES

Frances Willard — Opens delicate pale pink changing to white with a yellow suffusion in collar.	\$1.50
Kelway's Glorious — A lovely dependable white.	3.00
Le Cygne — A grand white of beautiful form and substance.	2.25
Therese — Rose pink. A most dependable performer.	2.00
Walter Faxon — A delightful light pink of real charm.	1.50
Mons. Jules Elie — Dark lavender pink. An old standby.	1.50
Felix Crousse — A bright cheerful red of merit.	1.00
Richard Carvel — Very early, lovely red.	1.50

Value \$14.25

All Seven Plants for \$12.00

(Above are all double)

FINE JAPANESE TYPE

Kathalo — A lovely light pink. The orchid of peonies.	\$3.50
Pride of Blasdell — A rose pink of much promise.	3.50
Mrs. Wilder Bancroft — A very attractive red.	3.00
Battle Flag — Deep glowing red.	2.00
Aztec — Bright scarlet rose.	2.50

Value \$14.50

All Five Plants for \$12.00



TOKENS OF ELEGANCE AND REFINEMENT

Each Spring blooming season finds more and more flower fanciers interested in the better varieties of iris, and rightly so. Iris are so easily grown and they produce such beautiful flowers for the garden and for cutting. The lovely coloring — clear colors, contrasts and blends are unsurpassed by any other flower.

Hybridizers working in the various sections of our Country, as well as those breeding iris in the gardens abroad have made remarkable improvements in the iris during the past decade or more. Anyone visiting gardens during the blooming season, where the modern iris are growing, will soon recognize the new colors and improved forms. The most outstanding new color is the clear light pinks with red or tangerine beard. The blues also have seen considerable improvement.

We have collected and propagated some of the very finest varieties from the leading hybridizers and are offering them on the following pages. In addition to the new and rare ones we also offer stock of many of the good, dependable, lower priced varieties.

Visit our gardens when the iris are in bloom in early June. You will see many modern varieties and also some of the iris of the future. It is easy to select when plants are in bloom, and you can be very choosy, too, because there is an iris to suit every taste.

Iris are easily grown in any sunny, well-drained location, and they will bloom there with little or no attention, but if you wish to have choice flowers — flowers that you will be proud of, and the kind that will make your friends and neighbors thrill with admiration, give them the best of care. Follow direction given with every order. Join the American Iris Society which will give you all the latest information about new introductions, improved cultural methods and other valuable information that will help you to grow and enjoy the best in iris.

DESCRIPTIVE LIST OF IRIS

- Aladdin's Wish** (Murawska 1945) Here is really a break in iris color that is most pleasing and novel. The color is difficult to adequately describe, being a lovely shade of dulcet medium blue, with brushings of cream radiating through the flower. Flowers are very large, with full broad standards and copiously formed falls. Substance excellent and branching very good. 36". **\$5.00**
- Amigo** (Williams 1934) This iris is very suggestive of a velvety blue-purple pansy having very heavy texture and fine form. S. clear light lavender violet. F. deep hyacinth violet shading out to a lighter violet. 34". **\$1.00**
- Aztec Copper** (Kleinsorge 1939) Uncommon blend of smoky violet and delicate coppery tones combined in lovely harmony that baffles accurate description. Positively large in size with broad hafts of leathery substance. Midseason. 38" **\$1.50**



Chivalry



Azure Skies

Azure Skies (Pattison 1943) A perfectly formed, ruffled, azure-blue self. Standards are firmly domed and falls flaring almost horizontally. The white beard adds clarity and gives a pleasing sense of coolness. Splendid substance. One of the most lovely, light blue iris to date. 36". **\$3.00**

Blue Crown (Washington 1945) Lovely blue and white reverse bi-color with a frosty sheen enveloping the whole flower. Semi-flaring falls, pure white, with slight ruffling. Beautifully formed flowers and delicate contrast of standards and falls is most effective. Heavy substance, good branching and fragrant. Midseason. 36". **\$6.00**

Blue Monarch (Sass 1933) A light blue, finely branched iris. Blooms large and full and of a beautiful clear tone of blue. 42". **35c; 3 for 90c**

Blue Shimmer (J. Sass 1942) Midseason. A large blue and white plicata that stands out in the garden. The wide standards and falls are patterned with blue over a white background. Good branching. Rates 89. 39". **\$4.00**

Blue Valley (K. Smith 1947) Large and beautifully shaped medium blue self with flaring falls. A very close approach to true blue. Delightfully ruffled upon opening. Has a fine metallic sheen that sparkles all over. Haft is wide and the color continues into the heart of the flower. Beard tipped a light, dull orange. Excellent branching and flowers well spaced. Vigorous grower and fast increaser. Late midseason. 40". **\$25.00**

Bright Melody (Snyder 1942) Color of a concord grape. Received H. M., A. I. S. in 1942. Metallic sheen with chestnut haft. An attractive, unusual purple shade. Midseason. 42". **\$3.00**

Bryce Canyon (Kleinsorge 1944) Named for this colorful canyon. The warm shades of henna and copper closely resembles the mellow, yet glowing colors to be found in that region. Large, with highly domed standards and rather rounded falls. Bronze yellow beard. Firm substance, Height and branching good. H. M., A.I.S. Midseason. 36". **\$10.00**

Burning Bronze (Ayres) 1934) One of Dr. Ayres' finest seedlings. A dark metallic red blend. Flower is very large. A red purple glow at end of beard. This color changes to a deep wine purple, with a bronze overtone in the falls and standards. 40". **\$1.00**

- Buttercup Lane** (D. Hall 1940) A very heavily ruffled, crisp, fair sized light yellow on a strong well branched 32" stem. The form of the flower is ideal and the substance extra heavy. This clean, bright yellow has to be seen to be fully appreciated. **\$1.00**
- California Gold** (Mitchell 1933) A beautiful bright yellow with striking metallic sheen. Flowers large and of faultless form. Noteworthy for its very commendable tendency to bloom again in the fall, and sometimes more or less all winter in mild climates. Unquestionably the best all round yellow at a moderate price. 36" high. **35c**
- Cascade Splendor** (Kleinsorge 1945) Most attractive in color and form. This large-flowered blend of pink, apricot and tan has won high praise from iris judges. Flowers large and of good substance, with decided ruffling in both standards and falls. Sturdy stems with good branching. H.M., A.I.S., 1945. Late. 36". **\$10.00**
- Chantilly** (D. Hall 1945) This iris has a heavy frilling done in such a free and easy manner it gives the petals the effect of being edged with old lace of a lighter shade than the rest of the flower. The color is orchid-pink and the flower is very large. Chantilly is from the same line of breeding as the flamingo pinks that Mr. Hall is doing so much with. Has very good substance, is winter-hardy and a free bloomer. **\$7.50**
- Chivalry** (Wills 1944) A most impressive flower. It is deeper in color than Great Lakes and larger in size. The domed standards are large and full. The flaring falls are broad hafted and strong. The beard is orange, changing to blue at tip. Standards and falls are ruffled. Well branched and splendid placement of blooms. This is a very fine real blue iris of outstanding merit. 36". **\$15.00**
- City of Lincoln** (H. P. Sass 1937) A midseason blooming, fairly large, brilliant variegata. Standards are clear yellow and the falls a red-brown with a golden margin. These contrasting colors make the variety very interesting and desirable. A very popular favorite. **75c**
- Claret Velvet** (Weed 1940) Glowing blackish wine, without venation of any kind, set off by a pronounced burnt orange beard. Perfect form and good branching. Rather low growing, 30". **\$1.00**
- Claribel** (J. Sass 1936) S. White, frilled blue. F. white. A very pleasing iris. **50c; 3 for \$1.25**
- Deep Velvet** (Salbach 1939) A very large, rich deep red violet. Standards and falls nearly the same color, with the exception of the falls at the haft are a rich blackish red purple shading to frosty claret brown. 38". **\$1.50**
- Desert Song** (Fay 1946) Nicely proportioned cream iris of large size with a light airy ruffle. Flowers are a cream self. The large flaring and ruffled flowers are of nice proportion and bloom over a very long season. The haft is without reticulations and the beard is yellow. The stalk is very strong, well branched and 40" tall. Midseason. Winter hardy. **\$15.00**
- Display** (Grant 1942) A beautiful new red toned iris, dark and rich; more of a self, than most reds. Rich and brilliant. The perfect smooth color bloom without any veining at the haft, is one of the darker, rich reds, a highlight in the garden. A fine iris close to true red. **\$3.00**
- Dore** (J. Sass 1935) Here is an iris that is popular with us. The standards are a lovely yellow and ruffled. The falls are a creamy white, 37". **50c 3 for \$1.25**

- Dreamcastle** (Cook 1943) A very lovely pure orchid-pink done to perfection. A near white beard emphasizes the solid orchid-pink coloring. The flower is full with domed standards and falls of exceptional width, full and rounded. This gives the flower an extraordinary full and billowy effect. **\$10.00**
- Eleanor Roosevelt** (Sass-McDade 1933) This variety was awarded the Hutcheson Gold Medal for the best fall blooming iris of the year. It is a deep flourite purple self of fine carrying power and in addition to its fall blooming characteristic, it has given a full months blooming season in the Spring. Rather dwarf grower. **50c**
- Elmohr** (Loomis 1942) A very rich red-violet seedling of Wm. Mohr. Unlike its parents it is a strong grower and the flowers are large and of very good substance. A mulberry purple might be a better description of the color. The stems are at least three feet tall. You will like this one and find it a worthy addition to your iris collection. Excellent branching habit. **\$1.25**
- Elsa Sass** (H. Sass 1939) Here is a lovely light yellow that is outstanding. An entirely new shade of yellow, clear sulphur with a greenish cast in its depths and a near white blaze near the haft. The blooms are large, slightly frilled at edges. 36". **60c; 3 for \$1.50**
- Exclusive** (Grant 1937) Late bloomer 38". A distinguished light blue iris quite different from other blues. A light blue color which is of great purity, overlain with a silvery mist producing a "powder blue" or French blue effect. This serene iris of opulent oval form and enamel-like finish is a most reposeful color. **40c**
- Fair Elaine** (Mitchell 1938) Standards are almost cream while the falls are an emphatic yellow set off with a most fiery orange beard. This and Elsa Sass are truly distinct innovations in the field of yellow iris. 40". **75c; 3 for \$2.00**
- Firecracker** (D. Hall 1943) Midseason bloomer. 32". One of the most brilliant plicatas imaginable. The undercolor is yellow with heavy plicata markings of glowing Burgundy red. Free flowering, good substance, medium height. It is so bright that it stands out prominently from a considerable distance in the garden. Has a good rating and has won an Honorable Mention from the American Iris Society. **\$5.00**
- Garden Magic** (Grinter 1936) After several years growing, this variety still holds a good lead among the best red iris. It is a very smooth, dark velvety red, almost maroon. The beard is orange. Excellent in form and good substance. Not a rapid grower. 38". **\$1.00**
- Glory** (Rev. D. R. Kinish 1947) An aura of sanctity seems to emanate from this large ruffled self of clear, cream yellow. Domed standards are of a clear color. Falls long and broad are lightly veined and flecked with gold, suggesting a glistening halo over the fragrant flowers. Sturdy stems. Midseason. 34". **\$10.00**
- Golden Eagle** (D. Hall 1942) A brilliant light yellow with a satiny sheen. One of the very largest of the yellows. Unlike most yellows, it is without a hint of orange or amber. A very rapid grower with good form and substance. A very free bloomer with strong, well branched 38 inch stems. **\$1.50**
- Golden Fleece** (J. Sass 1940) As the name might indicate, this is not a deep yellow iris, but rather a lemon-colored flower with creamy falls, edged gold. Beautifully ruffled and large size; tall grower. 40". **\$2.00**
- Golden Majesty** (Salbach 1938) Runner-up for the 1942 Dykes Medal. A large and rich pure yellow that seems to do well in all sections of the country. Few are so nearly perfect in so many respects, for this has color, ideal form, substance, wonderful poise, adaptability, and a haunting fragrance. 42". **75c**

- Golden Treasure** (Schreiner 1936) Solid deep cream but with an outpouring of rich golden orange all about the central portion of the flower. This a very hardy variety and a good garden subject. Perfectly branched and very floriferous. 36". 50c; 3 for \$1.25
- Grace Mohr** (Jory 1935) This is a seedling of Wm. Mohr and a much improved variety. Pale lilac, veined and netted a deeper shade of lilac (manganese). Flaring falls. Tall branched stems. Midseason bloomer. 35". \$1.00
- Great Lakes** (Cousins 1938) A new clear blue self. Clearer in color than Shining Waters. It is ideal in form and carriage. A broadly spreading regal type of flower with handsome foliage and finely branched 4-foot stalks. Has been the recipient of many awards. \$1.00
- Gudrun** (K. Dykes 1930) Not many iris have enjoyed the popularity of this variety. A heavily textured enormous white with petals like that of a magnolia. It has a brilliant orange beard and a slight gold dust sprinkling over the entire bloom. A consistent winner at iris shows. 36". 50c
- Helen McGregor** (Graves 1946) Color a clear blue, lighter than Great Lakes. Not a trace of lavender in it. Flowers large, of rounded form with very broad hafts and beautiful ruffling on both standards and falls. There is a silvery white flush surrounding the almost white beard. Heavy substance, sturdy stems and well branched. Rated 91 in 1946. A very desirable variety. Late midseason bloomer. 36". \$18.00
- Idanha** (Kleinsorge 1942) A pronounced bi-color with apricot yellow standards and pinky, lavender falls. Individual blooms are large, long lasting and well spaced on widely branching, tall stems. Midseason bloomer. 45". \$1.25
- Illinois Sunshine** (Faught 1946) Large yellow self with a intense orange beard. Substance very fine. Good branching. A very fine yellow sure to please. \$10.00
- Jasmine** (Grant 1944) A very smooth golden yellow without any brown or orange tones. Flowers are a clear color with a decided velvety sheen on the falls. No haft markings. Standards are conic and domed and the falls semi-flaring and full. Heavy texture and well branched. H.M., A.I.S. 1944. Midseason. 40". \$15.00
- Jasper Agate** (Mrs. T. Williams 1943) A master stroke of rich, jewel-like coloring. A faultless medley of gold and copper red with an underlaying copper pink tone. An unusual coalition of color assembled with consummate skill. One of the newer iris colors with a beautiful lacquer-like finish without a marring vein. Not large or tall but very striking in appearance. A most desirable acquisition. \$6.00
- Jeb Stuart** (Washington 1932) Here is one of the richest brown-red subjects to be found in the garden. Tall and stately with domed standards and flaring falls that are much darker because they are so velvety. A deep orange beard lightens up the bloom. 40". 50c; 3 for \$1.25
- Joycette** (J. Sass 1932) Dark maroon red, practically a self. Very heavy substance and excellent form. Well branched stems, often bearing several flowers at the same time. 42". 50c; 3 for \$1.25
- Kalinga** (Kleinsorge 1934) An extremely large cream self, outstanding not only as an exhibition spike but as a garden specimen as well. The broad spreading ivory-textured blooms generally come out in groups of three or four simultaneously and each stalk will carry from twelve to fifteen blossoms. 48". 50c; 3 for \$1.25



Lake Breeze

Kwan Yin (Wilhelm 1938) Here is a very effective iris for the garden and one greatly admired by our customers. Its color is apricot and is a self. Flowers are of good size and are produced abundantly. A splendid orange beard adds to the beauty of the flower. Very similar in color to May Day. 36".

50c; 3 for \$1.25

Katherine Fay (Fay 1943) Here is a grand white by a comparatively new originator of iris who is going places with his new creations. It is a large, pure white with no yellow in the center. The falls are semi-flaring with enough ruffling to take away the plain appearance of a so-called tailored flower. It has excellent substance, is absolutely hardy in this climate, and should prove most desirable wherever iris can be grown. 35".

\$7.50

Lake Breeze (Fay 1945) A midseason blooming variety that is most refreshing and lovely. A large, very ruffled light blue iris with just a suspicion of pink delicately diffused on the center of the standards and falls. Broad, full standards, firmly held and almost meeting over the beard. The falls are flaring and wide, with no haft markings. Orange beard shading off to white at the tip. Vigorous and thoroughly hardy, with nine to eleven heavy substantanced flowers on each well branched stalk. 37". This is a "must have" for every real iris fancier.

\$8.00

Lighthouse (Salbach 1936) Standards are old rose; the flaring falls rose-red, with a great torch of gold lighting up the center of the flower. A most unusual coalition of colors that is most pleasing to the eye. 36".

75c

Lothario (Schreiner 1942) Large, rich, striking blue bi-color. Essentially the same color pattern as Amigo. Very huge in size on tall branched stems. Light blue standards and rich plush blue purple falls, without veining or markings. Full orange beard making a rich contrast in color combination. Late midseason. 42".

\$5.00

Los Angeles (Mohr-Mitchell 1927) Snowy white throughout except for a light stitching of cerulean blue at the haft and at the base of the standards and a beard of soft yellow gold. Tall, vigorous and well branched. 42". 35c; 3 for 90c

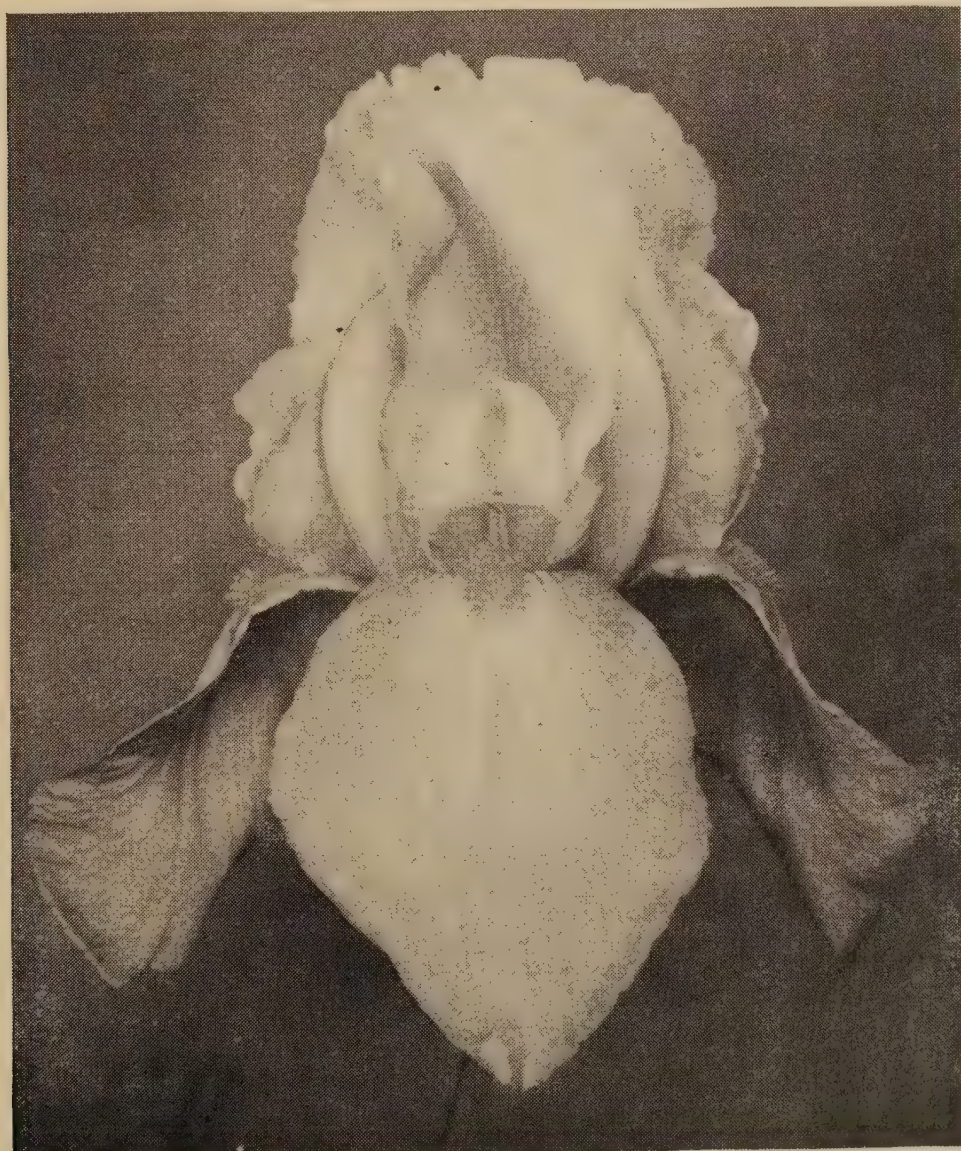
Lynn Langford (D. Hall 1946) Here is another grand iris originated by Mr. Hall that seems to be a general favorite with all visitors in the garden. A deep toned, orchid-pink with a golden yellow center which is smoothly blended into the orchid pink without veining. The flower is large, of good form, heavy substance and is carried on a strong 36" stem. A very free bloomer and an outstanding creation. \$12.00

Magenta (Cayeux 1927) A red purple self. We have always admired this variety as it makes a fine garden subject. 36". 35c; 3 for 90c

Mandalay (D. Hall 1943) A smooth reddish rose self, a new and very attractive color that has been much admired. The standards are domed and the falls flaring. The flowers are carried on a well branched 32" strong stem. Free bloomer and very hardy. \$2.00

Marquita (Cayeux 1931) An amoena type in cream and watermelon rose. Its luminous cream standards are the last word in serene but warm exquisiteness. The watermelon-rose falls are veined rather than solidly colored. A lovely iris. 40c

Mary Clotilde (Rev. D. R. Kinnish 1944) Tall, midseason variety. Large, very evenly colored light blue. Semi-flaring blooms on tall, well branched stems. Falls are broad, evenly colored with no veining whatever. Beard inconspicuous, white, tipped blue. Fragrant and a good performer. Parentage, Blue Triumph x Shining Waters. \$2.50



Lynn Langford

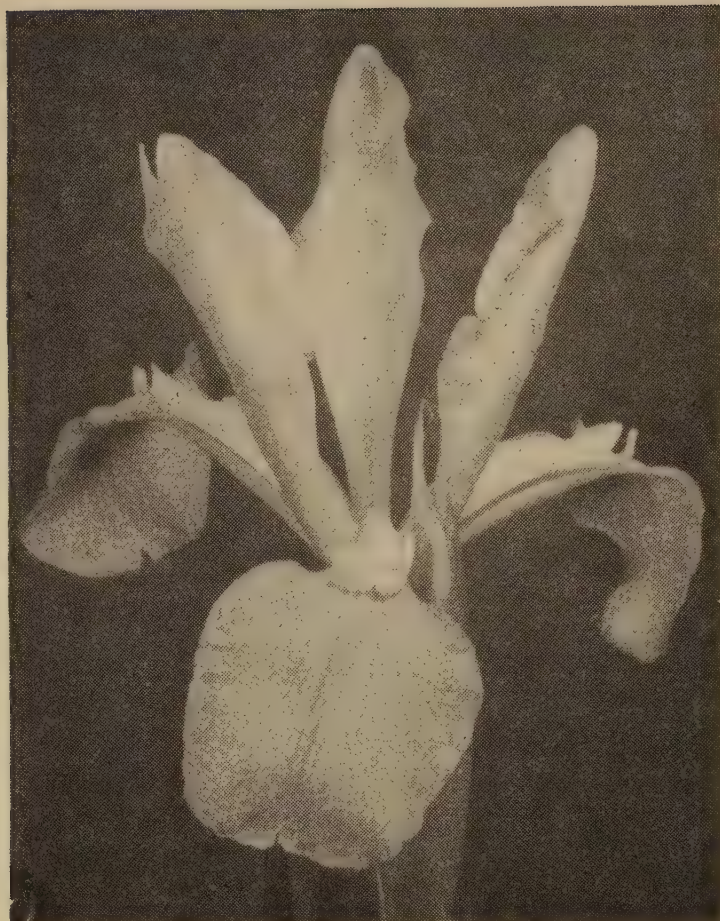
- Mary E. Nicholls** (Nicholls 1939) Warm white self with gold inlay on haft. Prominent yellow beard. Medium large flowers with heavy substance and satiny texture. A lovely flower both in form and exquisite finish. 38". Refined and chaste. 75c
- Mary Geddes** (Washington 1931) A warm and pleasing color of salmony orange that is most effective. This is a Dykes Medal winner and well deserving of the award. The stiff standards are light yellow-salmon. The semi-flaring falls are the same, overlaid with red. 40". 35c; 3 for 90c
- Master Charles** (Williamson 1943) A rich, glowing mulberry iris, with a definite charm and flare to the form. The flower has a wonderful sheen that gives it a glowing, rich effect. Color is excellent and it does not fade. Standards are a true purple, with overlaying black sheen blending to madder brown at base. Falls a rich purple, overlaid velvety black, blending to madder brown at haft. Beard a mulberry purple, tipped brown. Vigorous, free flowering and excellently branched. 38". \$5.00
- Matterhorn** (J. Sass 1938) Here is a pure white iris that is a dandy. Even the beard is white. A delicate iris despite the fact that it is large in size and has rather slender stems, well branched. 36" or better in height. \$1.00
- Matula** (H. P. Sass 1939) A very beautiful blend of brilliant rose, rich orange, crimson and buff. This variety created much favorable comment when introduced. The flowers are very large with long falls that are waved and crimped. 38". 50c
- Mexico** (Kleinsorge 1943) A blended bi-color of gay and brilliant coloring. The golden buff standards are closely domed. the falls flaring and slightly ruffled, are glowing red-brown, with a heavy plush-like finish. Flowers are extremely large and sturdy. H.M., A.I.S. 1944. Late midseason bloomer. 40". \$3.00
- Midwest Gem** (H. P. Sass 1937) A large, pale apricot yellow lightly flushed with pink. The delicate coloring combined with the heavy texture sparkling with gold makes this iris appealing to the eye and most desirable. Both standards and falls are serrated and crinkled. 40". 75c
- Ming Yellow** (Glutzbeck 1938) Here is a yellow without a fault. One of the largest and the blooms are carried with an easy grace on well branched stems. A very even tone of yellow that is most appealing. Proved the most popular in our garden last season among the yellows. 36". \$1.00
- Miss California** (Salbach 1937) Enormous lilac pink, a pleasing tone with a lemon yellow beard. Tall, strong foliage and blooms over a long period. It is deeper than Morocco Rose in color and slightly veined. Midseason, 40". 75c; 3 for \$2.00
- Moonlight Madonna** (J. Sass 1943) This iris can be visualized as a greatly improved Elsa Sass, possessing the same fresh coloring with the added beauty of full rounded form, heavy substance and excellent branching habit. The flowers are ruffled and the crisp texture adds greatly to their beauty. \$3.00
- Morocco Rose** (Loomis 1937) Very large rose-pink self, with a soft yellow glow at the heart and a brownish cast about the haft. This is getting the nearest to a genuine pink in our recent offerings. Unlike most iris of its color, Morocco Rose is a really big flower. Color does not fade. A grand iris. 38". 75c
- Mulberry Rose** (Schreiner 1941) A large flower of mulberry rose that blooms in midseason. It is quite distinct from other iris in commerce. The novel color

- makes it stand out prominently in a garden planting and makes an imposing picture with its well branched stems. The general color effect is bright rose-purple. Very hardy and vigorous. 40". \$2.50
- Nancy Hardison** (G. Douglas 1945) A peach pink with the softest blending of pale yellow concentrating in the beard and the heart of the flower. Standards arched and ruffled, firmly held together by the strong mid-rib. Flaring falls are broad at the haft and rounded at the tips. Firm substance and splendidly branched. H.C., A.I.S. 1943. Late midseason. 36". \$10.00
- National Prosperity** (Weed 1933) A very deep blue with a bright gold beard that is most attractive. 40". 35c; 3 for 90c
- Nightfall** (D. Hall 1941) Falls are a very rich dark pansy purple with almost no veining in the haft. Standards are several shades lighter than the falls, making a very striking color combination. Substance and form excellent. Strong grower and free bloomer. 36". \$1.50
- Ola Kala** (J. Sass 1943) This is a recent origination that has met with a most favorable reception. A very lovely, deep yellow; medium large ruffled flowers on well branched stems. 36". \$4.00
- Old Parchment** (Kleinsorge 1939) We think this one most aptly named. A light creamy tan with golden buff overlay; a most unusual color break. Perfectly huge blooms with heavy substance and one of the longest lasting varieties in the garden. 38". \$1.00
- Omaha** (H. P. Sass 1936) A large flowered blend of coppery pink and brownish cinnamon. 30". 35c; 3 for 90c
- Ormohr** (Kleinsorge 1937) Flowers similar in color to Wm. Mohr but larger with better branching. Color is gray-lavender with veins and dots of lavender throughout the flower. Rated 89. H.M. and A.M., A.I.S. Midseason. 40". 50c
- Ozone** (J. Sass 1935) A peculiar shade of rosy lavender that is distributed through both the standards and falls, with a pronounced copper area through the center. If you are looking for something distinct in coloring, try this one. 36". 50c; 3 for \$1.25
- Pale Dawn** (Fay 1947) A pale blue iris that does not fade. The very large, full-petaled tailored flowers are borne on strong, perfectly branched stalks. Haft is wide and clean. Falls flaring, standards domed. Plants large and vigorous. Winter hardy. Early. 41". \$12.00
- Paulette** (Millet 1930) Light blue-purple, bicolor, very large. Good branching and free bloomer. 50". 50c; 3 for \$1.25
- Pink Cameo** (Fay 1946) An exquisite, fresh pure pink; one of the famous "flamingo pink" line. Outstanding qualities are the pinkness, smoothness and purity of tone and melting softness of color. This is a real pink color that has been so elusive to capture. The shading is a beautiful, translucent, camoe pink with a striking tangerine-orange beard. Excellent branching. Good substance. Good sized flowers, slightly flaring. Very early blooming. A grand acquisition. 36" \$15.00
- Pink Cloud** (Fay 1946) One of the best orchid pinks for massing. Very lovely in the landscaping planting. Color a light orchid pink shading to near white at the center of the flower. Excellent substance and branching. \$6.00
- Ranger** (Kleinsorge 1943) A late blooming variety. Large, long flower of almost true crimson that is very brilliant in the garden. It is a self with strong, firm texture in both standards and falls. One of the last to bloom. Very floriferous, with strong stalks and fine branching habits. 36". \$4.00

- Red Gleam** (Lapham 1939) We think this iris is very aptly named as it does present a red gleam when viewed in bright sunlight. It ranks well up among the red-toned iris. A very free bloomer and of good size. Texture is velvety, but exceedingly brilliant. 36". **\$1.00**
- Rocket** (Whiting 1945) Early midseason variety and one of the most discussed iris of recent years. Standards pure deep chrome and the falls are orange chrome, shaded a bit lighter at the edge. Flowers are large, broad petaled and of firm substance. Strong, well branched stalks. A clump of this variety has great carrying qualities in the garden. Rated 90 in 1946. 38". **\$20.00**
- Rosy Wings** (Gage 1935) A blend of deep rose and crimson brown. A very free flowering and rapid growing iris winning the Dykes Medal in 1939. 40". **50c**
- Royal Coach** (H. P. Sass 1939) Here is a plicata with decidedly more yellow in its makeup than others in the series of Sass plicatas, with a definite brown stitching. 36". **50c; 3 for \$1.25**
- Ruth Pollock** (H. P. Sass 1939) The Sass Brothers have produced a number of yellow ground plicatas during recent years but consider this one the best of the lot. A smooth tone of soft yellow, beautifully marked with reddish stitching. 36". **\$1.00**
- Sable** (Cook 1938) Uniform shade of deepest blue-black violet with blue beard. Sable has every attribute that a really good iris should possess — large size, tall stalk, heavy substance and a wonderfully lustrous sheen. Here is one you can't go wrong on and is most highly recommended. 40". **\$1.00**
- Samovar** (D. Hall 1941) A very brilliant and colorful iris, quite different in color from any iris we have seen and is particularly desirable for landscape effect for that reason. The color is a coppery rose, with fair substance. A very vigorous grower, hardy and a free bloomer. **75c**
- Sarah Kinish** (Rev. D. R. Kinish 1944) Tall, late midseason. Fine medium blue of perfect semi-flaring form. Standards are clear, medium-blue, slightly ruffled. Falls are a shade deeper, with wavy edges of about the same color as the standards. Blue tipped beard. Stem is strong and well branched. Lilac fragrance. **\$4.00**
- Serenite** (Cayeux 1931) A very good light, blue-toned blend. 48", **35c; 3 for 90c**
- Sharkskin** (G. Douglas 1942) A lovely tall white iris, with an almost velvet finish and firm substance. The domed standards are very broad and have a strong midrib. Falls are arched and flaring, with a pale glistening yellow flush deep in the throat. Very nicely branched, with large and well proportioned flowers. 44". **\$4.50**
- Siegfried** (H. Sass 1936) Huge flowers, slightly fluted. Late midseason blooming. Pale sulphur-yellow with stipling and dottings of brown on both the standards and falls. Very different and much in demand. 40". **50c**
- Snow Flurry** (Rees 1939) A beautiful ruffled white like an enveloping soft snow spray. The unopened buds are lightly tinted blue but the blossoms open a cool white. Large flowers, strong substance on tall stems. Short branching. Needs some protection in cold climates. Early midseason. 40". **\$1.50**
- Snowqualmie** (Brehm 1938) A midseason iris of mellow, creamy yellow, smoothly finished and with exceedingly heavy substance. Well branched. Grows to about 40" in height. **75c; 3 for \$2.00**

- Snow King** (H. P. Sass 1935) Fine large white flowers on well balanced, tall branching stems. Very hardy and desirable in every way. 38". **35c; 3 for 90c**
- Snow Velvet** (H. Sass 1942) An excellent, very velvety textured, white iris with a gilding of gold in the throat. Very tough texture withstanding rain, sun and wind in an exceptional manner. In spite of gold throat it is very white. **\$2.50**
- Spring Chimes** (D. Hall 1939) A large golden russet self, a shade lighter than Nightingale. This is a new and very attractive color. Very rampant grower, hardy and a free bloomer. The form is good and substance fair. 38". **\$1.00**
- Spun Gold** (Glutzbeck 1940) An iris of deep golden yellow. There is no veining or shading to mar the purity of the color. The flower is a self, but over the whole surface of the falls there is a velvety luster that adds to the depth of color. Very nicely branched with good substance. Dykes medal winner for 1944. 38". **\$2.50**
- Stained Glass** (Wilhelm 1939) A copper-red self that is one of the most brilliant irises when viewed with the sun behind it. In such a light it greatly resembles stained glass. It is not a red iris, but a solid copper of reddish tone. It has a prominent bronze yellow beard. 36". **75c**
- Stardom** (D. Hall 1941) According to Ridgeway's color chart this is an onion-skin pink, although it does have a strong pink tone. It is one of those off colors very difficult to describe. The flower is a self, has good form, substance and branching. Free bloomer and a good increaser. 34". **75c; 3 for \$2.00**
- Tapestry Rose** (D. Hall 1942) Here is another lovely introduction by Mr. Hall. The flowers are large and of a soft old rose carried on well branched, stout stems. Form and substance are good. 38". **\$2.00**
- The Admiral** (D. Hall 1941) Here is really an exceptionally fine blue iris. An effective, intense blue that is a little deeper than medium blue. Mr. Hall considers this as near to the standard of perfection as any iris he grows and we heartily approve his recommendation. The falls flare in a dashing manner; the finish and substance are outstanding. There is no variety grown that will take more punishment from the burning sun and driving rain without fading or losing form than "The Admiral." A truly remarkable origination. **\$1.00**
- Tip Top** (Hall 1947) A striking and unusual color combination. The standards are a solid violet blue and the falls white, with a very delicate peppering of blue in the throat and on the edges of the falls. Medium sized flowers have a clean, crisp appearance. Well branched. Substance and form good. 30". **\$10.00**
- Wabash** (Williamson 1936) Probably the most outstanding anemone of today. Standards are white and the falls hyacinth violet with a very definite white margin. This gives the flower a striking contrast that is both pleasing and attractive. 39". **\$1.00; 3 for \$2.50**
- West Point** (Nicholls 1938) A perfectly poised, refined indigo-blue with falls more intensely indigo with brownish cast at the haft worn like epaulets on a blue uniform. Wide, well formed flowers. Late blooming. A magnificent iris well worth a place in any planting. 38". **75c; 3 for \$2.00**
- Zua** (Crawford 1914) Here is an intermediate iris of real charm and beauty. It is a sport of Florentine according to iris check list. The general effect in coloring is a light lavender that is most attractive due to the creped substance of the petals. It can easily be mistaken for an orchid when used as a corsage. Has a pleasing fragrance. **75c; 3 for \$2.00**

Sunny Day



SPURIA IRIS

Here is an iris that has not had the publicity it richly deserves and has been overlooked by many gardeners. Their blooming season is late, following the bearded types. They are distinctly beautiful and effective in the garden planting or as specimen clumps. Their stiff, sword-like foliage remains throughout the summer and blends well with other foliage. Excellent for cutting and extremely hardy. Early September is the best time to plant. This gives the plant some time to get established before heavy freezing is encountered.

Blue Zephyr (Washington 1943) 42". A charming light blue; one of the most beautiful of the Spurias. The large erect standards are powder blue. The falls flare and are of the same color, but due to the white area around the yellow signal they appear to be lighter than the standards. The flowers have very firm substance and the stems are sturdy. **\$3.50**

Euphrosene (Washington 1931) 40". A very bright clear blue of splendid shape and form; decidedly yellow signal on falls; an excellent variety with several flowers open at a time. **\$2.00**

Hazy Hills (Washington 1931) 4'. Standards deep blue; falls hazy blue with gold flush; brilliant yellow signals and throat. **\$3.50**

Lord Wolsely (Barr 1899) 4'. Deep blue-purple with yellow signal. Large flowers on good strong stems. **\$1.00**

Shelford's Giant (Foster 1913) 4½'. Pure white with rich yellow signal patches on the falls. Large flowers; fine for cutting. **\$1.00**

Sunny Day (H. Sass 1931) 4½'. A tall clear canary yellow with no markings on the haft. Large flowers with artistic form and great beauty. A perfect cut flower. **\$1.00**

SIBERIAN IRIS

Tycoon (Cleveland 1938) 34". The largest Siberian iris. The flowers have broad petals and a lovely violet-blue color with satiny finish. **\$5.00**

Glossary of Iris Terms

Various terms designated and applicable to iris used in the descriptions in our catalog may be defined as follows:

S. designates standards; **F.** falls.

Amoena (pleasing), white or tinted white standards with colored falls.

Plicata (pleated), stitched or stippled margin-color on white background.

Variegata, yellow or near-yellow standards with deeper falls, which may be either veined or solid tones of brown or purple.

Blend, combination of two or more colors.

Bicolor (two colors), light or medium standards and deeper falls.

Self, an iris of uniform color.

Texture, sheen or finish of the petals.

Substance, thickness of petals.



An Effective Iris Border



HEMEROCALLIS

It is only within recent years that Hemerocallis (commonly called daylily) has been fully recognized as having a rightful place and being worthy of a very choice location in any garden planting. Here is a perennial that can "take it" in most any section of the country, and it seems to give good results in lime or acid soil; sand or clay; sun or light shade; hot or cold; wet or dry situations. Now here is something to consider, for where can you find another perennial that can live up to these specifications?

The habit and character of the daylily makes it one of the most useful perennials. The plants are bushy to the ground and the foliage blends in well with other leaves.

Recent introductions have brought new colors and types that are very appealing to the eye and a distinct break from the common yellow, or orange, that one is apt to associate with daylilies. They can now be had in peach tints; pastel tones; blended tones or solid colors, from soft yellow to wine red. Some of the two-tone effects are really startling revelations of what the hybridizer is able to accomplish.

There is still much to be done, and the field of producing new colors and combinations of color is barely touched. The past ten years have seen more accomplished with this perennial than any fifty preceding years. The season of bloom has been greatly extended, so it is possible to have bloom throughout several months. Another prominent feature that has been developed in the recent originations is the fact that they hold their bloom longer at night or when cut and brought into the house.

Alone, or combined with other flowers, they make splendid floral arrangements and are also delightful for garden and foundation planting. Naturalizing along creeks or near a pool will be really worth while as they need so little attention and no coddling whatever.

August Pioneer (Stout 1939) Blooms from mid-August until October. Grows to a height of 36". Flowers are medium sized and lavishly set on slender, graceful stems. Chrome-orange in color, with outer half of petals delicately flushed red. Due to the very late blooming habit of this variety it is very much worth while.

75c

Bertrand Farr (Stout 1941) Full flowers of medium size, with recurving petals and sepals. The color is near grenadine pink (Ridgeway), with darker rose coloring in the veins. A clean, coppery pink that sparkles in the sunlight. 20 inches.

\$2.50

Bijou (Stout 1935) A distinct and small flowered variety that branches freely and blooms profusely. Ground color of orange; clear in the throat, overcast with fulvous red over the rest of the flower, with a slightly darker mid-zone. Height, about 24". July-August bloomer. Dainty and refined.

75c

Boutonniere (Stout 1939) As the name indicates, this is a rather small blooming variety with wide open, overlapping and recurving petals. Sepals are a clear yellow; petals a light rosy peach with a trace of mid-stripe. Grassy foliage. Good, early-fall bloomer, August-September. Grows about 36" in height.

75c

- Caballero (Stout)** A distinct bicolor. Petals vermillion red, throat and sepals golden yellow. A tall, gay and brilliant addition to the summer garden. July-August. 4 feet. **\$2.00**
- Chamois Pink (Nesmith 1945)** A soft creamy-pink background with an overlay of rose on both petals and sepals and the mellow finish of thick chamois. The form of the flowers reminds one of Madonna lilies borne in clusters on long, well branched stalks. Blooms in July and August. 40". **\$6.00**
- Chengtu (Stout)** Color sprightly, brilliant, coppery orange-red, with a deep velvety carmine mid-zone. Blooms July to late August. Height, 36". Flowers are large, 4½", pleasingly recurved. A very lovely variety and a fine addition to our list of hemerocallis. **75c**
- Doubloon (Nesmith 1945)** Broadly formed flowers of deep, glistening golden-yellow without marking or blending of any other color. Extremely large flowers have a glistening sheen, with broad ribbed petals, slightly ruffled at the tips. Long season of bloom. August-September. 44". **\$7.00**
- Duchess of Windsor (Traub 1937)** One of the new creams that are needed for the garden picture. This color is a step toward white that is missing in this perennial. Grows to a height of about 24". You will find this a very worthy and desirable variety. **\$2.00**
- Fulva Maculata** A late bloomer, July to late August. Very large bold flowers, orange-red in color. Very moderately priced variety that still ranks with the July and August. **\$1.00**
- Fulva Rosalind (Steward 1924)** This is a selected species of Fulva Rosea and one of the most beautiful of any known wild species of hemerocallis. The flowers are rose-pink in color and borne on tall, graceful stalks 42" tall. Blooming season July and August. **\$2.75**
- Gaiety (Betscher 1940)** A very fine, free blooming, light yellow that is a fine addition to your day-lily list. **\$1.50**
- Gay Troubadour (Nesmith 1941)** This is an entirely different and charming hemerocallis, being a most unusual cream yellow and red bicolor. The petals are bright Indian red in stunning contrast to the sepals of frosty maize yellow. Very flaring flowers of great beauty and refinement. Blooming period, July and August. 40". **\$2.50**
- George Kelso (H. P. Traub)** Midseason, light bronzy-rose; bi-color. Fine for garden effect. **\$3.00**
- George Yeld (Perry 1926)** A very large flowered variety that will give complete satisfaction wherever planted. The color is a rich orange, flushed rose. Very beautiful flower. 40". July-August. **75c**
- Hesperus (H. P. Sass 1930)** A magnificent yellow chrome with very large open flowers of splendid form and substance. The large stalks are very tall, well branched and stury. Height 46". **\$2.00**
- Honey Redhead (Nesmith 1942)** A very brilliant and unusual combination of colors that is highly praised by hemerocallis judges. Flowers are open and flaring of velvety bright rose-red with a distinct border of pale creamy-yellow. Good branching. 38". July-August. **\$5.00**
- Hyperion (Mead 1925)** Large canary colored flowers on long, straight stems that are a fine addition to any planting of hemerocallis. Very fine substance, with a smooth surface. 36". July and August. **75c**

- Lidice** (H. P. Traub) Early midseason, orange, suffused reddish yellow. Multiflora habit. Very bright color. \$3.50
- Mikado** (Stout 1929) Flowers of mellow orange with a large spot of contrasting mahogany red in each petal. Very fine spreading habit and one of the most popular varieties we have. Flowers very large and most effective. Blooms June to August on 36" stems. We feel confident you will like this one. A very rapid grower which soon develops into a large clump. Very free bloomer on well branched stems. 50c
- Mission Bells** (D. Hall 1945) A large, wide-petaled ruffled flower of clear, medium yellow, producing up to 50 flowers to a stalk on established plants. A very fine variety that is a strong grower and a free bloomer. July-August. \$5.00
- Mrs. W. H. Wyman** (Betscher 1929) A pale, glistening yellow with much appeal. Large flowers borne on well branched stems. 36". July and August. Has stood the test of time and is still popular. 75c
- Ophir** (Farr 1924) A fine, large, deep golden yellow on stout, well branched stems. The petals are broad and of firm texture. One of the best of the older varieties. 75c
- Orange Beauty** (H. P. Sass 1944) Flowers extremely large with broad segments, opening flat. About 5½" in diameter. Color, orange self. Very fragrant. 34 buds on 40" stems. July and August bloomer. \$10.00
- Patricia** (Stout 1935) Pale yellow with a tinge of lemon chrome with greenish throat. Very large, shapely full flowers with a pronounced fragrance. Petals and sepals of uniform tone. Exceptionally good in hot sun and early evenings. Blooms July-August. 30". A very charming flower of fine habit. 75c
- Porcelain Pink** (Nesmith 1945) A luminous pink with an almost lacquered finish. Flowers are recurving in form resembling a full cupped lily with petals and sepals narrowing at the tips. The smoothly finished flowers have a peach background painted deeper pink. Tall, well branched stems with many flowers. Color near chamois pink. August-September. 39". \$6.00
- Purple and Gold** (Nesmith 1940) Subdued deep oxblood-red heavily flushed dark velvety maroon with a contrasting cup of orange. A very rounded flower. Not as purple as a the name implies but rather a rich maroon. July-August. 33". \$4.00
- Rajah** (Stout 1935) A hemerocallis with large and gaily colored blooms. The throat and background of the flower is orange with eye zone of garnet brown. Blooms July-August. 42". \$1.00
- Rosalind** (See Fulva Rosalind)
- Royal Ruby** (Nesmith 1942) A marvelous flower of almost crimson red with glow and life throughout. We consider this the best red hemerocallis in commerce. A smoothly finished flower with full semi-reflexed petals and sepals. Stalks are medium height with good branching. July-August. 38". \$10.00
- Ruby Supreme** (Wheeler) An outstanding red of deep ruby shade. Large flowers up to 7 inches. Petals very wide, main color antique ruby, sepals a little lighter. Throat greenish gold, a narrow gold line extending through the petals. Tall strong grower. Blooms late June and July. \$7.50
- Serenade** (Stout 1937) A very light pastel shade of pink and yellow in pleasing harmony. Petals twisted and crinkled with faint halo. Flowers medium large on tall, slender stiff stems. Lovely in arrangements with a combination of Perry's Blue Siberian iris. June-July. 48". \$1.00

- Sovereign (Yeld)** Fine deep orange-yellow. Grows about 30" tall. Blooms early. A very good one. 75c
- Starlight (Nesmith)** Pale creamy yellow. This is termed a night blooming variety which means the blooms do not close as early in the evening as most varieties. Blooms July to September and is a very free bloomer. 39". \$5.00
- The Gem** Rich, deep orange-yellow on 3½ to 4' stems. In full bloom by June 20th in this section. A very fine variety, aptly named. 75c
- Theron (Stout 1934)** A much heralded hemerocallis of dark, red purple with great depth of color. The petals and sepals are recurving at the tips with a velvety flush extending down to the medium yellow cup. July bloomer. 34". \$2.00
- Wau-Bun (Stout 1929)** Uniform cadmium yellow; outer half overcast delicate fulvous red; petals large and broad. The freely curving contour of petals gives the flower a very delicate appearance. Long flowering season; July-August, sometimes extending into October, or until cut off by frost. 75c
- Wolof (Stout)** Fine dark velvety maroon, throat clear orange. Flowers are large size 4½", full and spreading. A midrib of light yellow enhances the flowers attractiveness \$2.50
- Zouave (Stout 1941)** Near to a red bicolor. Blooms in June. Petals a rich fulvous red, with darker mid-zone. Sepals slightly lighter. Medium sized and well branched. This variety remains open evenings and usually blooms again in September. \$2.50

AN INVITATION

To keep fully informed about your peonies and iris you will find it to your advantage to belong to the American Peony Society or the American Iris Society, or both. The dues in each Society are \$3.00 per year and the quarterly bulletins will more than compensate you for the small amount of dues. There are many other privileges you may enjoy by becoming a member of these societies.

If interested, in peonies, send your remittance of \$3.00 to W. F. Christman, Secretary, American Peony Society, Northbrook, Ill., and for the iris address Sam Y. Caldwell, 444 Chestnut Street, Nashville 10, Tenn. Remittance should be made payable to either the American Peony Society or the American Iris Society, as the case may be.

In addition to the invitation extended to join one or more of the Horticultural Societies you have a standing invitation to visit our gardens.

During the growing season there is usually something of interest but in late May or early June the iris will be at their best and from the 8th to the 20th of June the peonies will be in bloom if weather conditions permit. Hemerocallis are also in bloom throughout the Summer.

We will be only too pleased to send a copy of this catalog to any of your flower loving friends if you will give us their name and address. Let us help you make your present plantings more beautiful by the addition of some of our offerings.

ALPHABETICAL INDEX OF PEONIES

- A. B. C. Nicholls 1
 A. B. Franklin 1
 Adolphe
 Rousseau 23
 Adonis 11
 Akashigata 32
 Akbar 33
 Alberta Kelsey 11
 Albiflora (The
 Bride) 26
 Alesia 1
 Alice Harding 1
 Alma 30
 Alsace Lorraine 1
 Ama-no-sode 32
 Amelia 35
 Anna Sass 11
 Antoinette Heim 1
 Apple Blossom 30
 Arcturus 28
 Armistice 20
 Aureate 30
 Avalanche 2
 Aztec 33

 Ball O' Cotton 2
 Baroness
 Schroeder 2
 Battle Flag 34
 Ben Cofeld 20
 Ben Franklin 24
 Betty Blossom 2
 Black Warrior 24
 Blanche Elie 2
 Blanche King 20
 Blush 11
 Blushing Bride 27
 Buffalo Girl 21

 Cathedral 32
 Cathie Ann 21
 Charlene 2
 Charm 34
 Chief 11
 China Maid 31
 Chippewa 24
 Claire Dubois 21
 Claude
 Barrow Jr. 12
 Clemenceau 21
 Cleopatra 24
 Coral Isle 12
 Coral Queen 12
 Cornelia Shaylor 12
 Cornelia Stone 12
 Cornie Moore 28
 Dainty 27
 Daisy Sherk 12
 Departing Sun 32
 Diana 2
 Donald 21
 Dorothy J. 12
 Dr. Barnsby 21
 Dr. J. H. Neeley 2
 Dr. O. M. Skinner 12
 Duchess de
 Nemours 2
 Duluth 2

 Early Morn 27
 E. C. Shaw 12
 Edith Scovell 12
 E. F. Kelsey 3
 Elisa 12
 Elizabeth
 Huntington 13
 Ella
 Christiansen 21
 Ella Lewis 12
 Elma 31
 Elsa Sass 2
 Elwood Pleas 12
 Enchanteresse 3
 Ernest
 Hutchinson 21
 Evening Glow 13
 Evening Star 3
 Exotic 21
 Exquisite 13

 Fanny Lee 24
 Felix Crousse 24
 Festiva Maxima 3
 Fireplace 24
 Florence
 Macbeth 13
 Florence Nicholls 3
 Flower Girl 13
 Footlights 3
 Frances Willard 3
 Frankie Curtis 3
 Franklin's Pride 21
 Fred W. Pratt 3
 Frontier 13
 Fuyajo 34

 George W.
 Peyton 13
 Germaine Bigot 21
 Gleam of Gold 3
 Glowing Embers 32
 Golden Dawn 3
 Golden Glow 35
 Goldfinch 31
 Gold Mine 32
 Gold Star 31
 Gopher Beauty 28
 Grace Batson 13
 Grace Gedge 4
 Grace Kelsey 13
 Grandiflora 13
 Guidon 13

 Hansina Brand 14
 Hans P. Sass 14
 Harriet Olney 27
 Harry F. Little 4
 Harry L. Burden 14
 Harvest Moon 29
 Hazel Kinney 14
 Helen 27
 Henry Avery 14

 Ida Mellinger 24
 Imperial Red 28
 Inca 28
 Inspecteur
 Lavergne 24
 Instituteur Doriat 34
 Irving Flint 14
 Irwin Altman 24
 Isani-Gidui 30
 Ivory Brooch 4

 James Boyd 14
 James Kelway 4
 Jap Giant 33
 J. F. Cooper 21
 Jimmy Franklin 28
 John M. Good 4
 Josephine Hope
 Healy 21
 Joseph Plagne 34
 Josette 27
 Judge Berry 14
 Judge Snook 14

 Kagawa 33
 Kansas 24
 Karl Rosenfield 24
 Kate Barry 31
 Kathalo 31
 Katherine
 Havemeyer 14
 Kelway's
 Glorious 4
 Kickapoo 28
 King of England 34
 Kobe 33
 Krinkled White 26
 Kukeni-Jishi 31
 Lady Alexandra
 Duff 14
 Lady Kate 22
 La Fraicheur 27
 Lake O'Silver 15
 La Lorraine 4
 Lancaster 14
 La Pinja 31
 Largo 33
 La Salle 29
 Last Rose 22
 Laverne
 Christman 15
 Laura Dessert 4
 Laura Ellen 22
 Laura Kelsey 15
 Laura Treman 15
 Le Cygne 4
 Le Jour 27
 L'Etincelante 29
 Leto 30
 Lights Out 22
 Little Buffalo 15
 Longfellow 25
 Lora Dexheimer 25
 Loren Franklin 22
 Lottie Dawson
 Rea 15
 Louis Barthelot 4
 Louis Kelsey 5
 Lucy Dunn 16
 Lulu Little 16
 Luxor 5

 Macrophylla 35
 Mafeking 29
 Mahogany 35
 Man O'War 29
 Marie Jacquin 5
 Marie Lemoine 5
 Marietta Sisson 16
 Marilla Beauty 6
 Marta 35
 Martha Bulloch 22
 Mary Auten 5
 Mary Brand 25
 Mary E. Nicholls 6
 Mary B. Vories 6
 Matilda Lewis 25
 Maud L.
 Richardson 22
 May Corbin 22
 Mel Gedge 6
 Mikado 34
 Minerva 16

Minnie Shaylor 16	Nancy Nicholls 8	Queen of	Takaradama 30
Minuet 16	Nellie 28	Hamburg 18	Tatsugashira 33
Mischief 28	Nell Shaylor 8	Raoul Dessert 19	T. E. Carpenter 10
Miss Innocence 6	Neon 31	Rare Carving 19	The Fleece 10
Mme. Butterfly 33	New Era 8	Rare China 9	Thelma 27
Mme. Emile	Nick Shaylor 17	Rare Etching 9	The Nathans 23
Debatene 22	Nimbus 8	Red Star 34	Therese 19
Mme. Emile	Nina Secor 8	Reine Hortense 19	Thomas C.
Galle 16	Nippon Gold 33	Reverend H. N.	ThurLOW 19
Mme. Jules	Noel 25	Tragitt 9	Thor 26
Dessert 7	Noonday 33	Resplendent 9	Thura Hires 10
Modella 16	Odile 8	Richard Carvel 26	Tiny Tim 20
Moonglow 7	Old Forge 23	River Mist 9	Titania 10
Moonstone 16	Oliver Twist 31	Rosada 23	To Kalon 10
Mons. Jules Elie 22	Onahama 34	Rosalie 23	Tokio 33
Mons. Martin	Onondaga 25	Rose Fluff 23	Tomate-Boku 32
Cahuzac 25	Opal 17	Rose Glory 23	Toro-no-maki 30
Mont Blanc 6	Othello 29	Rose Marie 35	Torpilleur 35
Mother Ross 16	Ottawa 17	Rose Shaylor 19	Tourangelle 19
Mother's Day 6	Party Gown 8	Rose Valley 31	Trinket 10
Mrs. A. B.	Pastel 18	Rosy Dawn 27	Valor 26
Franklin 7	Patrician 18	Rubio 26	Vera 29
Mrs. A. M. Brand 7	Peach Blow 18	Ruth Clay 26	Vesper 20
Mrs. Bryce	Peggy 18	Salute 31	Victory 10
Fontaine 25	Philippe	Sarah Bernhardt 23	Victory Chateau
Mrs. Edward	Rivoire 25	Seneca Chief 28	Thierry 20
Harding 8	Phoebe Cary 18	Serene 19	Vina Mae 20
Mrs. F. A.	Phyllis Kelway 18	Shawne Chief 26	Walter Brewster 20
Goodrich 22	Pink Bonnet 27	Shaylor's	Walter Faxon 20
Mrs. Fern Lough 16	Pink Charm 18	Sunburst 30	Ward Welsh 10
Mrs. Frank	Pink Lustre 18	Shirley 9	Westerner 32
Beach 8	Pitti Sin 18	Silver Chalice 9	Westhill 20
Mrs. Franklin D.	P. officinalis	Silvia Saunders 19	W. F. Christman 11
Roosevelt 16	rubra 35	Sistie 19	White Beauty 10
Mrs. Harry F.	Polar Star 30	Snow Ball 9	White Delight 11
Little 17	Prairie Rose 28	Snow Brook 9	White Shrine 11
Mrs. J. H. Neeley 17	President	Snow Wheel 30	White Water 11
Mrs. John M.	Coolidge 18	Snow White 9	Wild Rose 27
Kleitsch 23	President F. D.	Solange 9	Willoughby 20
Mrs. J. V. Edlund 8	Roosevelt 23	Solo Flight 31	William F.
Mrs. Livingston	President Wilson 18	Some Ganoko 34	Turner 26
Farrand 17	Priam 26	Soshi 34	Williston 11
Mrs. W. C. Otis 17	Pride of	Spring Beauty 23	Wilton Lockwood 20
Mrs. Wilder	Blasdell 33	Starbright 10	W. L. Gumm 11
Bancroft 34	Pride of Essex 18	Stillman 10	Yellow King 32
Myrtle Gentry 17	Pride of	Strassburg 23	Yeso 30
Nancy Bonner 17	Langport 28	Sunmist 31	Youth 11
Nancy Dolman 17	Primevere 9		

IRIS — pages 37 to 48

HEMEROCALLIS — pages 50 to 53

Join the **AMERICAN PEONY SOCIETY** and the **AMERICAN IRIS SOCIETY**.

See page 53

TO OUR CUSTOMERS

PLEASE READ CAREFULLY BEFORE ORDERING

TIME OF SHIPMENT. Peonies will be shipped from September 1, until the ground freezes. Iris — July 15 until October 1, and hemerocallis August 15 to October 15.

PLEASE ORDER EARLY to avoid possibility of certain varieties being sold out. This will also assist us greatly in preparing orders for shipment. Orders filled in rotation as received. Late orders may mean disappointment to the customer.

We **ASSUME TRANSPORTATION CHARGES** (parcel post or express) on orders of \$2.00 or more. On smaller orders, add 25c for postage and packing.

REMITTANCES in full should accompany all orders. A 25% deposit will hold stock until shipping time when it will be sent balance C. O. D. For your own protection do not send currency or stamps. Personal check or Postal Money Order remittances preferred.

ILLINOIS CUSTOMERS — Please add 2% to listed prices to cover **Sales Tax**.

STOCK AND GUARANTEE. We ship only healthy, thrifty roots, freshly dug from our gardens. All stock guaranteed to be true to name. If any stock proves untrue to name, we hold ourselves in readiness, on proper proof, to replace all such stock, or refund the amount paid, but we shall in no case be liable for any sum greater than the amount originally received for said stock.

We cannot, due to circumstances beyond our control, assume responsibility after safe delivery. Cultural directions will be sent with each order.

You are always welcome to visit our Mission Gardens at any time. If you want to see some of the new and rare peonies, iris and hemerocallis we show below the approximate blooming dates.

Iris may be seen in bloom in a normal season from about May 25th to June 15th.

Peonies are usually in bloom from June 1st to June 25th. Usually at their best from June 10th to 17th.

Hemerocallis bloom for a long period of time, commencing in late May on through the summer months into early Fall. Wau-Bun sometimes blooms in October until cut off by frost.

MISSION GARDENS, TECHNY, ILLINOIS

